

KIMBALL, NEBRASKA

AL-6680 (FAA)

# RNAV (GPS) RWY 28

KIMBALL MUNI/ROBERT E. ARRAJ FIELD (IBM)

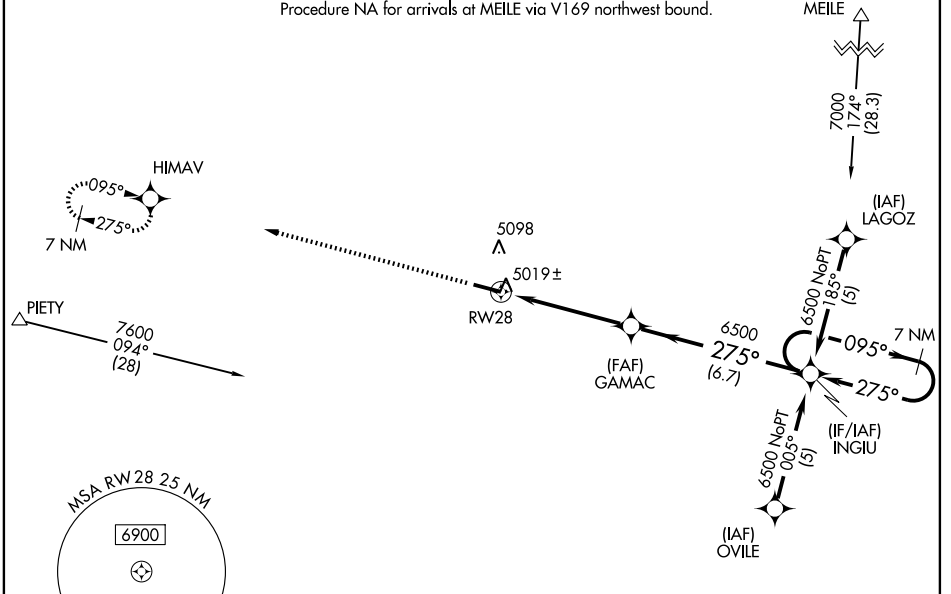
WAAS CH <b>42503</b> <b>W28A</b>	APP CRS <b>275°</b>	Rwy Idg TDZE <b>4908</b> Apt Elev <b>4926</b>	<b>6199</b>
--	------------------------	---	-------------

**NA** DME/DME RNP-0.3 NA. If local altimeter setting not received, use Sidney Muni/Lloyd W. Carr Field altimeter setting and increase DAs/MDAs 160 feet. For uncompensated BARO-VNAV systems, LNAV/VNAV NA below -24°C (-11°F) or above 39°C (102°F). BARO-VNAV NA when using Sidney Muni/Lloyd W. Carr Field altimeter setting. Visibility reduction by helicopters NA.

**MISSED APPROACH:** Climb to 7000 direct HIMAV and hold.

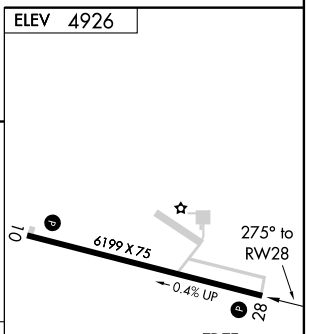
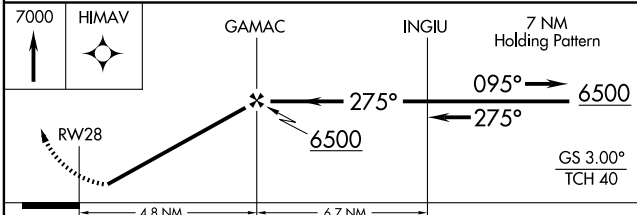
AWOS-3 <b>118.075</b>	DENVER CENTER <b>125.9 284.7</b>	UNICOM <b>122.8 (CTAF)</b> <b>0</b>
--------------------------	-------------------------------------	--

Procedure NA for arrivals at MEILE via V169 northwest bound.

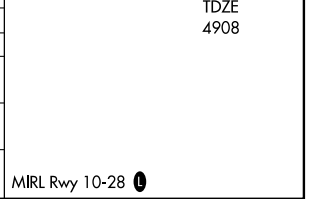


NC-2, 22 OCT 2009 to 19 NOV 2009

NC-2, 22 OCT 2009 to 19 NOV 2009



CATEGORY	A	B	C	D
LPV DA		5255-1¼	347 (400-1¼)	
LNAV/ VNAV DA		5321-1½	413 (400-1½)	
LNAV MDA	5380-1	472 (500-1)	5380-1¼ 472 (500-1¼)	5380-1½ 472 (500-1½)
CIRCLING	5380-1½ 454 (500-1½)	5420-1½	494 (500-1½)	5480-2 554 (600-2)



KIMBALL, NEBRASKA  
Orig-A 08269

41°11'N - 103°41'W

KIMBALL MUNI/ROBERT E. ARRAJ FIELD (IBM)

# RNAV (GPS) RWY 28