

# RNAV (GPS) RWY 13

BRITTON MUNI (BTN)

APP CRS <b>129°</b>	Rwy Idg <b>4210</b>
	TDZE <b>1318</b>
	Apt Elev <b>1318</b>

**NA** DME/DME RNP-0.3 NA.  
If local altimeter setting not received, use Aberdeen altimeter setting and increase all MDAs 100 feet.  
VDP NA when using Aberdeen altimeter setting.

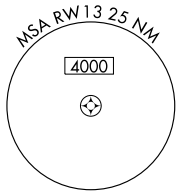
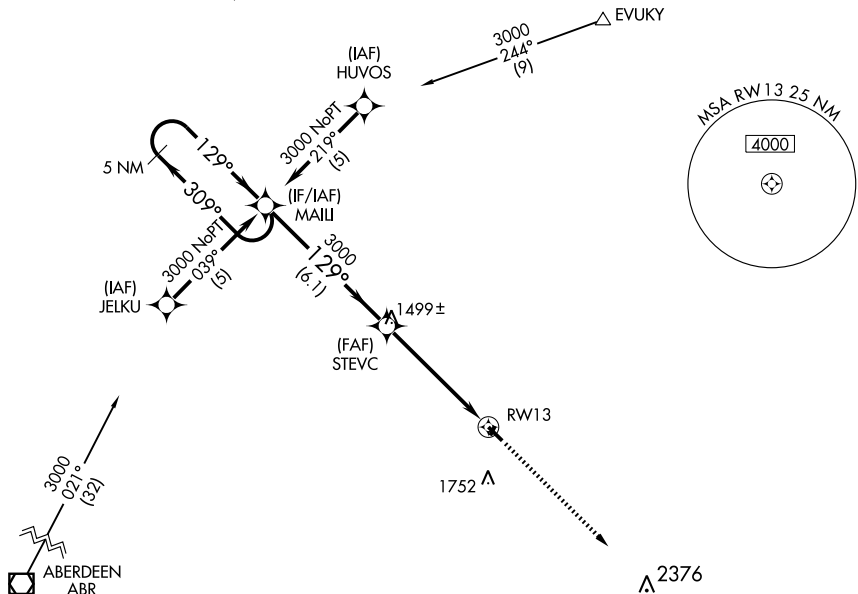
MISSED APPROACH: Climb to 3500 direct RNORD and hold.

AWOS-3  
**122.8**

MINNEAPOLIS CENTER  
**120.6 371.9**

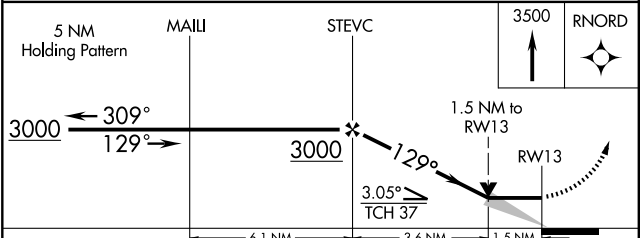
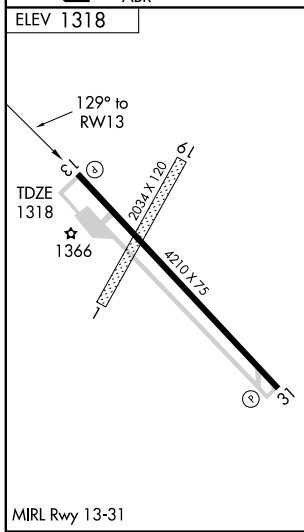
UNICOM  
**122.8 (CTAF)**

Procedure NA for arrivals at ABR VOR/DME via V170 southbound.



NC-1, 22 OCT 2009 to 19 NOV 2009

NC-1, 22 OCT 2009 to 19 NOV 2009



CATEGORY	A	B	C	D
LNAV MDA	1840-1	522 (600-1)	1840-1½ 522 (600-1½)	NA
CIRCLING	1900-1	582 (600-1)	2060-2¼ 742 (800-2¼)	NA