

# VOR/DME-A

AUSTIN/LAKEWAY AIRPARK (3R.9)

VORTAC CWK <b>112.8</b> Chan 75	APP CRS <b>081°</b>	Rwy Idg TDZE Apt Elev <b>909</b>	N/A N/A <b>909</b>
---------------------------------------	------------------------	---	--------------------------

**▲** Use Georgetown Muni altimeter setting; if not received, use Austin-Bergstrom Intl altimeter setting and increase all MDAs 40 feet. Procedure NA at night.

**MISSED APPROACH:** Climb to 2100 then climbing left turn to 3100 via CWK VORTAC R-261 to BAYED/35 DME and hold.

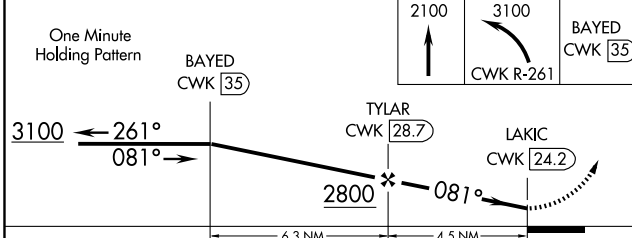
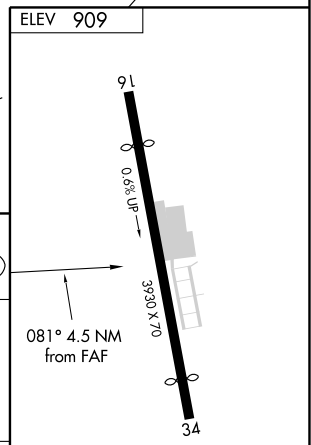
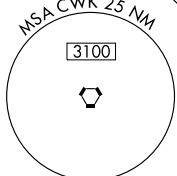
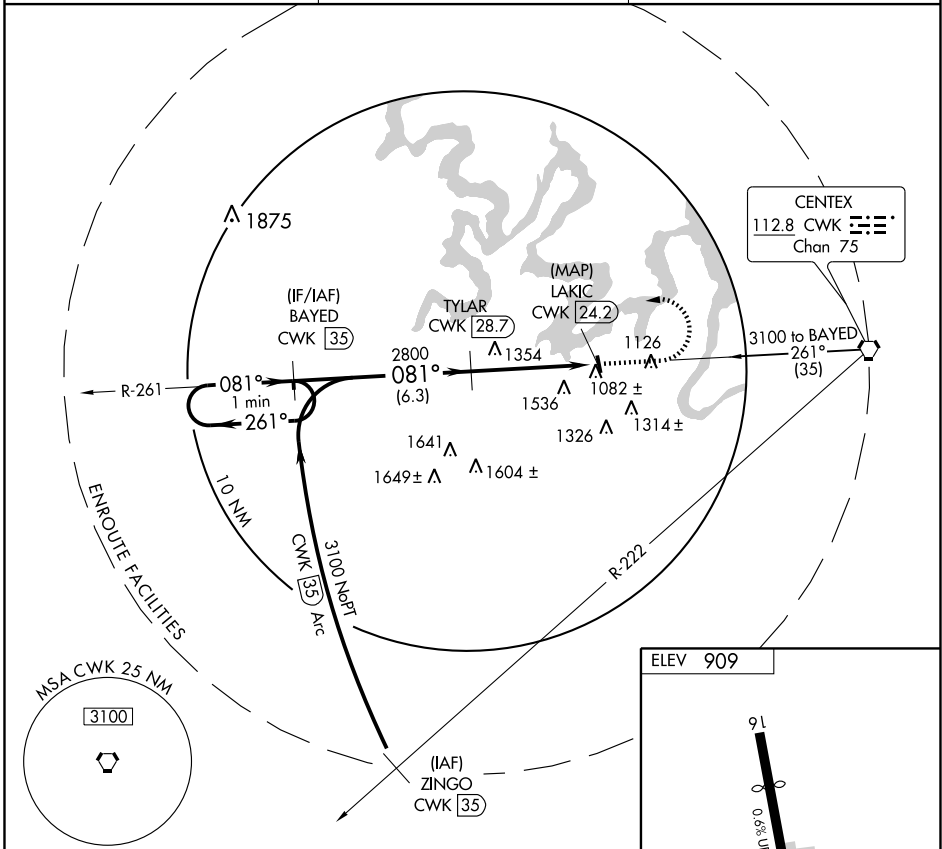
GEORGETOWN  
AWOS-3 **135.425**

AUSTIN APP CON  
**119.0 370.85**

UNICOM  
**123.0** (CTAF)

SC-3, 22 OCT 2009 to 19 NOV 2009

SC-3, 22 OCT 2009 to 19 NOV 2009



CATEGORY	A	B	C	D
CIRCLING	1920-1¼ 1011 (1100-1¼)	1980-1½ 1071 (1100-1½)	1980-3 1071 (1100-3)	NA