

AUSTIN, TEXAS

AL-6677 (FAA)

RNAV (GPS) RWY 16

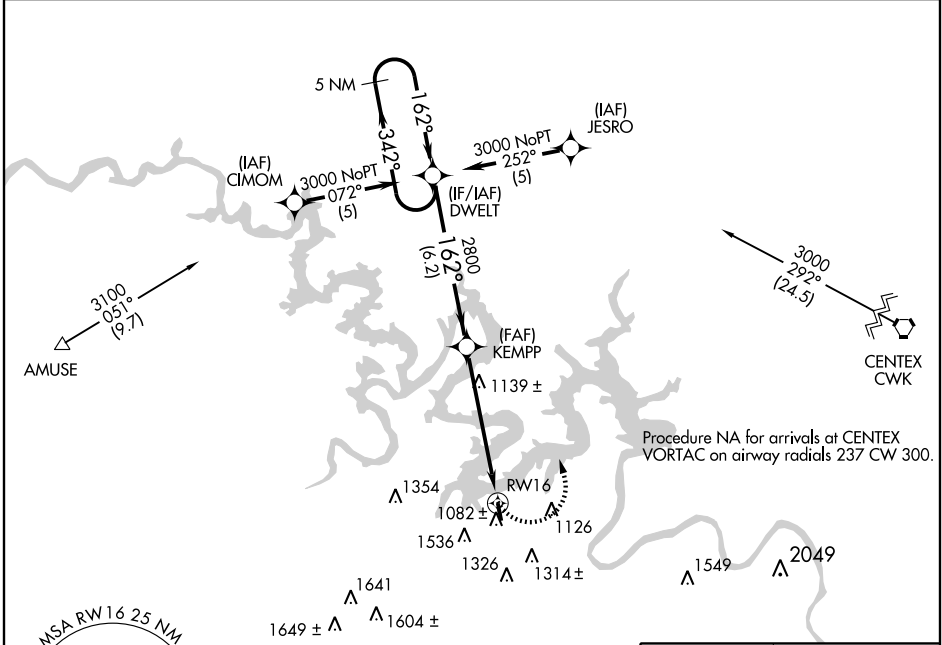
AUSTIN/ LAKEWAY AIRPARK (3R.9)

APP CRS	Rwy Idg	3148
162°	TDZE	903
	Apt Elev	909

▼ Use Georgetown Muni altimeter setting; if not received, use Austin-Bergstrom Intl altimeter setting and increase all MDAs 40 feet. Procedure NA at night.
▲ NA DME/DME RNP-0.3 NA. Visibility reduction by helicopters NA.

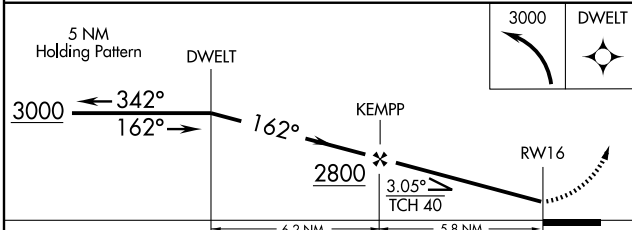
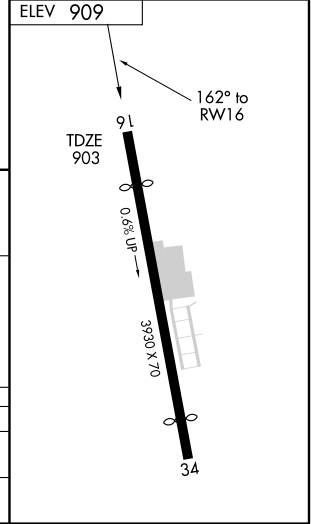
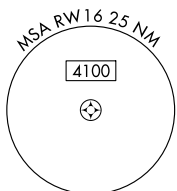
MISSED APPROACH: Climbing left turn to 3000 direct DWELT and hold.

GEORGETOWN AWOS-3 135.425	AUSTIN APP CON 119.0 370.85	UNICOM 123.0 (CTAF)
-------------------------------------	---------------------------------------	-------------------------------



SC-3, 22 OCT 2009 to 19 NOV 2009

SC-3, 22 OCT 2009 to 19 NOV 2009



CATEGORY	A	B	C	D
LNVA MDA	1680-1 777 (800-1)	1680-1¼ 777 (800-1¼)	1680-2¼ 777 (800-2¼)	NA
CIRCLING	1680-1 771 (800-1)	1980-1½ 1071 (1100-1½)	1980-3 1071 (1100-3)	NA

AUSTIN, TEXAS
Orig 09015

30°21'N-98°00'W

AUSTIN/ LAKEWAY AIRPARK (3R.9) RNAV (GPS) RWY 16