

LEESBURG, FLORIDA

AL-6676 (FAA)

# RNAV (GPS) RWY 31

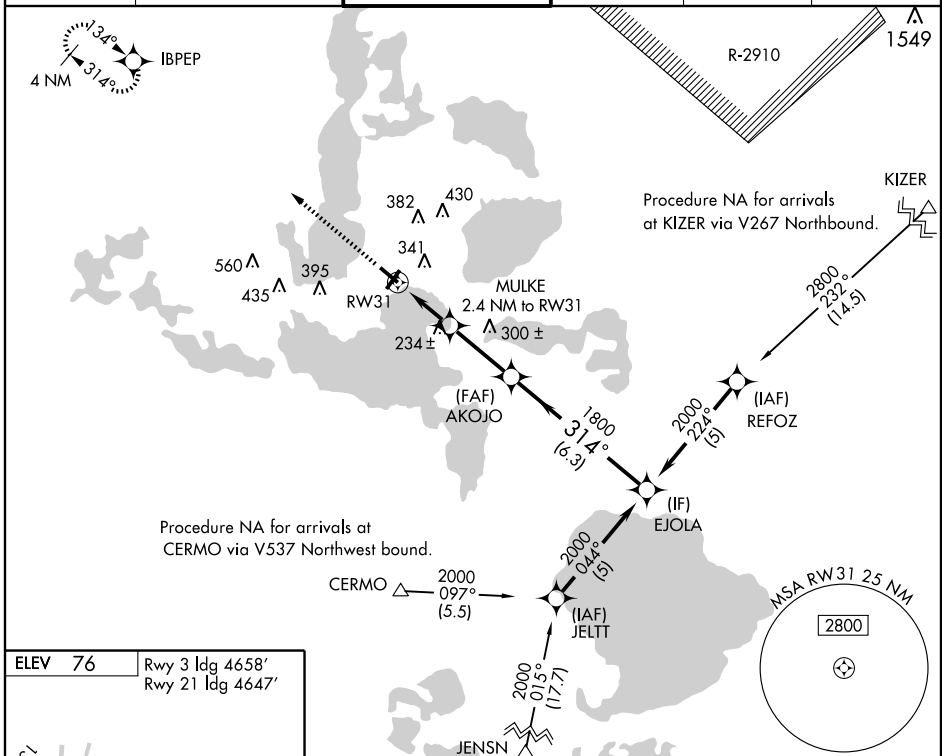
LEESBURG INTL (L.E.E)

WAAS CH <b>97602</b> <b>W31A</b>	APP CRS <b>314°</b>	Rwy ldg <b>5000</b> TDZE <b>75</b> Apt Elev <b>76</b>
--	------------------------	---

**▼** If local altimeter setting not received, use Orlando Intl altimeter setting: increase DA to 439 feet, and all MDAs 100 feet.  
**▲** DME/DME RNP-0.3 NA. Visibility reduction by Helicopters NA.

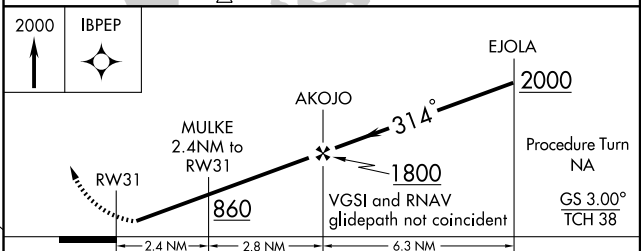
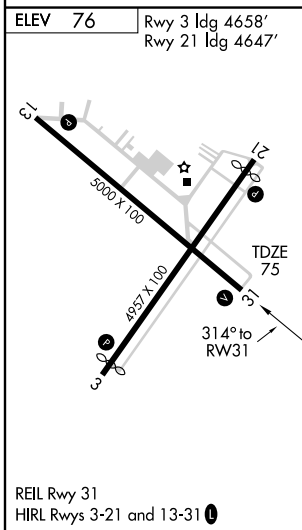
MISSED APPROACH: Climb to 2000 direct IBPEP and hold.

ASOS <b>134.325</b>	ORLANDO APP CON <b>121.1 351.9</b>	LEESBURG TOWER * <b>119.35 (CTAF)</b>	GND CON <b>121.725</b>	GCO <b>121.725</b>	UNICOM <b>122.725</b>
------------------------	---------------------------------------	--	---------------------------	-----------------------	--------------------------



SE-3, 22 OCT 2009 to 19 NOV 2009

SE-3, 22 OCT 2009 to 19 NOV 2009



CATEGORY	A	B	C	D
LPV DA	354-1 279 (300-1)			
LNAV MDA	500-1	425 (500-1)	500-1¼	425 (500-1¼)
CIRCLING	700-1	624 (700-1)	700-1¾	740-2 664 (700-2)

LEESBURG, FLORIDA  
Orig 09295

28° 49'N-81° 48'W

# RNAV (GPS) RWY 31