

RNAV (GPS) RWY 13

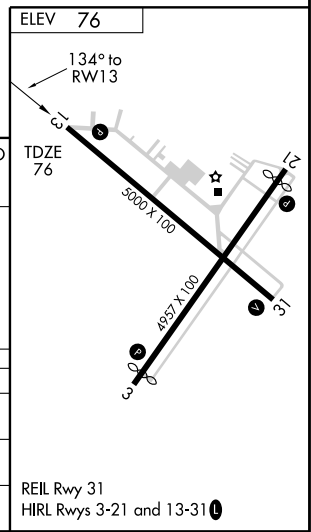
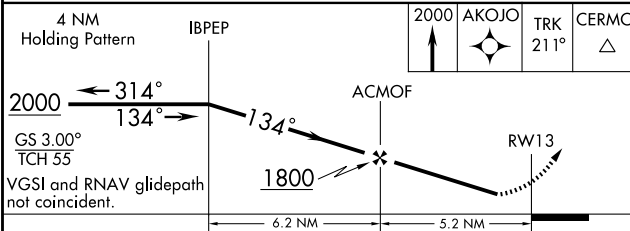
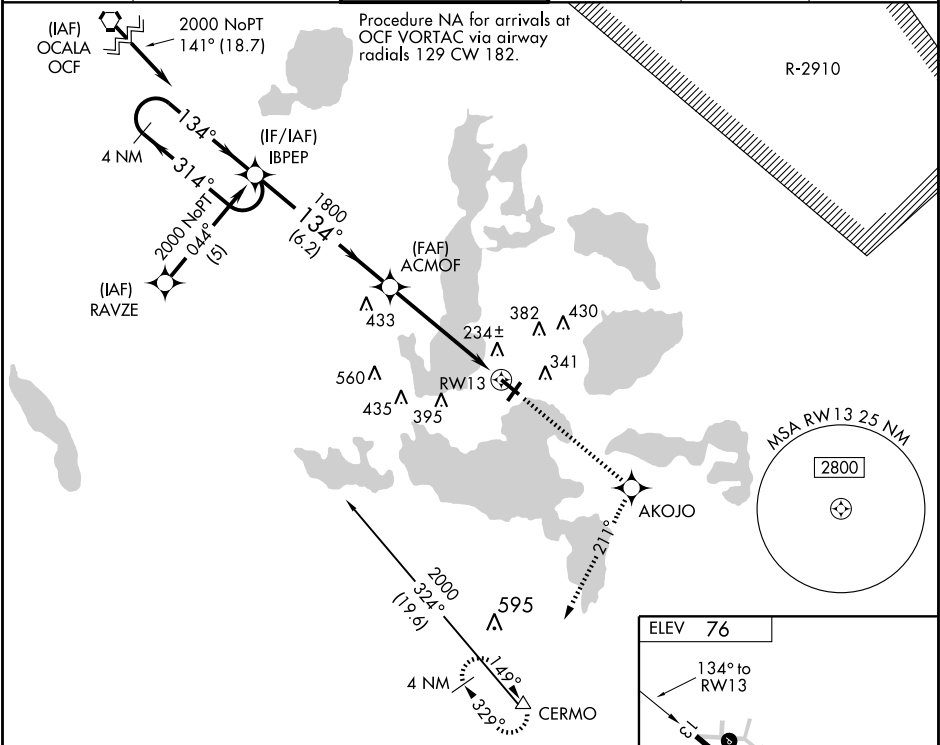
LEESBURG INTL (L/E)

WAAS CH 77802 W13A	APP CRS 134°	Rwy ldg TDZE 76 Apt Elev 76	5000
--	------------------------	---	-------------

▼ DME/DME RNP-0.3 NA. Visibility reduction by helicopters NA.
▲ When local altimeter setting not received, use Orlando Intl altimeter setting and increase DA to 498 feet, and all MDA 100 feet, and increase LPV visibility all Cats. ¼ mile, LNAV visibility Cat. C ¼, Cat. D ½ and Circling visibility Cats. C and D ¼.

MISSED APPROACH: Climb to 2000 direct AKOJO and via 211° track to CERMO and hold.

ASOS 134.325	ORLANDO APP CON 121.1 351.9	LEESBURG TOWER * 119.35 (CTAF)	GND CON 121.725	GCO 121.725	UNICOM 122.725
------------------------	---------------------------------------	--	---------------------------	-----------------------	--------------------------



CATEGORY	A	B	C	D
LPV DA	413-1¼		337 (400-1¼)	
LNAV MDA	500-1	424 (500-1)	500-1¼	424 (500-1¼)
CIRCLING	700-1	624 (700-1)	700-1¾ 624 (700-1¾)	700-2 624 (700-2)

SE-3, 22 OCT 2009 to 19 NOV 2009

SE-3, 22 OCT 2009 to 19 NOV 2009