

LEESBURG, FLORIDA

AL-6676 (FAA)

NDB RWY 31

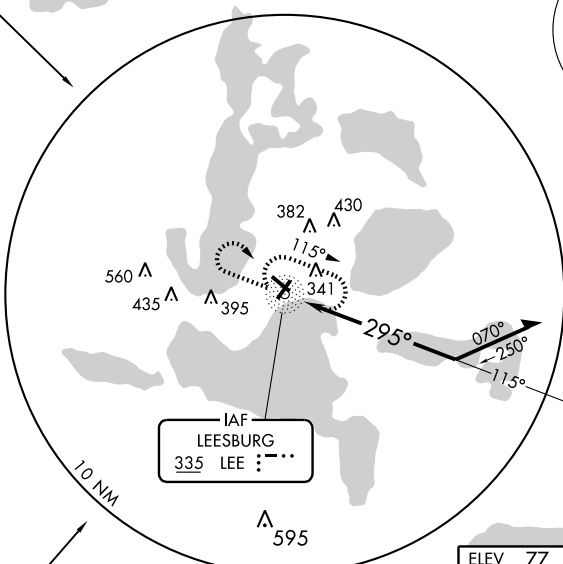
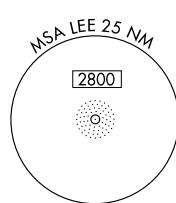
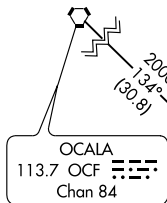
LEESBURG INTL (LEE)

NDB LEE	APP CRS	Rwy Idg	5000
335	295°	TDZE	76
		Apt Elev	77

▼
▲ NA

MISSED APPROACH: Climb to 1500 then climbing right turn to 2000 direct LEE NDB and hold.

ASOS 134.325	ORLANDO APP CON 121.1 351.9	LEESBURG TOWER * 119.35 (CTAF)	GND CON 121.725	GCO 121.725	UNICOM 122.725
------------------------	---------------------------------------	--	---------------------------	-----------------------	--------------------------

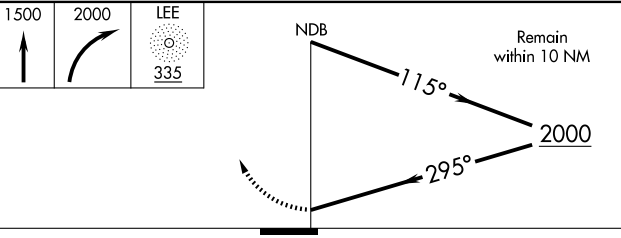
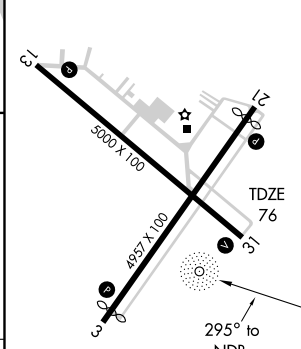


SE-3, 22 OCT 2009 to 19 NOV 2009

SE-3, 22 OCT 2009 to 19 NOV 2009



ELEV 77 Rwy 3 Idg 4658'
Rwy 21 Idg 4647'



CATEGORY	A	B	C	D
S-31	820-1 744 (800-1)	820-1¼ 744 (800-1¼)	820-2¼ 744 (800-2¼)	820-2½ 744 (800-2½)
CIRCLING	820-1 743 (800-1)	820-1¼ 743 (800-1¼)	820-2¼ 743 (800-2¼)	820-2½ 743 (800-2½)

REIL Rwy 31	HIRL Rws 3-21 and 13-31				
Knots	60	90	120	150	180
Min:Sec					

LEESBURG, FLORIDA
Amdt 1 09295

28° 49'N-81° 48'W

LEESBURG INTL (LEE)

NDB RWY 31