

HALF MOON BAY, CALIFORNIA

AL-6675 (FAA)

RNAV (GPS) Z RWY 30

HALF MOON BAY (HAF)

WAAS CH 50302 W30A	APP CRS 302°	Rwy Idg 4237' TDZE 54 Apt Elev 66
--	------------------------	--

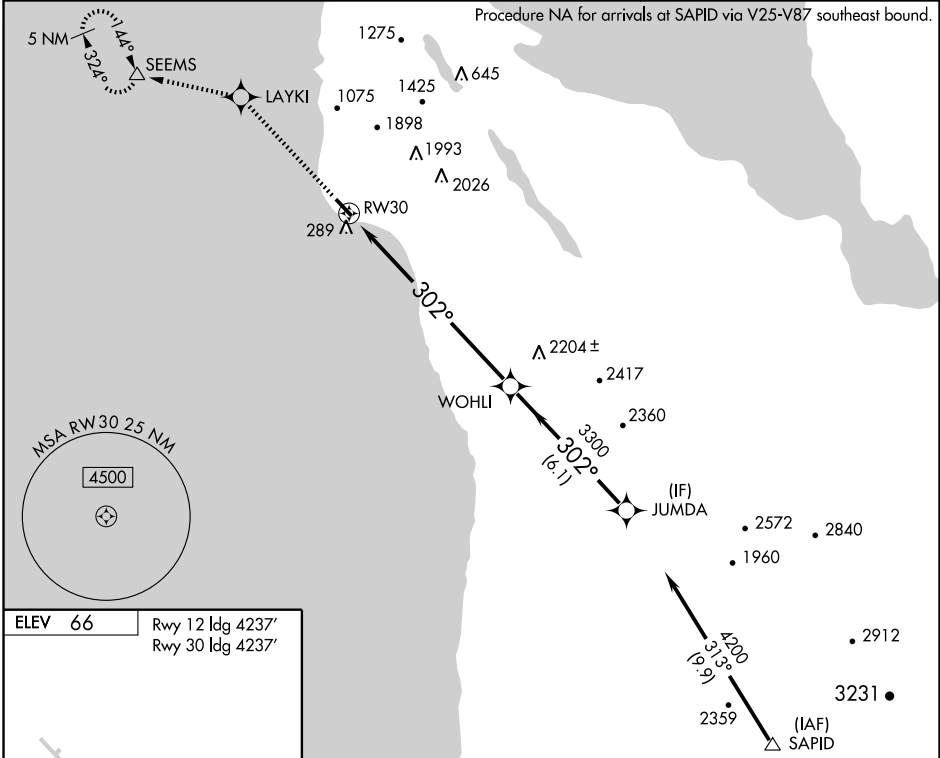
V DME/DME RNP- 0.3 NA.
A NA Obtain local altimeter setting on CTAF; when not received, use San Francisco Intl altimeter setting.
W

MISSED APPROACH: Climb to 6000 direct LAYKI and via 267° track to SEEMS and hold, continue climb-in-hold to 6000.

AWOS
127.275

NORCAL APP CON
135.1 307.2

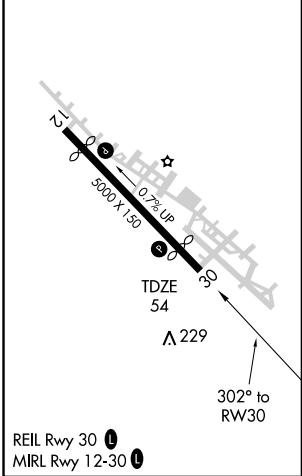
UNICOM
122.8 (CTAF)



SW-2, 22 OCT 2009 to 19 NOV 2009

SW-2, 22 OCT 2009 to 19 NOV 2009

ELEV 66 Rwy 12 Idg 4237'
Rwy 30 Idg 4237'



6000	LAYKI	267° track	SEEMS	Procedure Turn NA	JUMDA
VGSI and RNAV glidepath not coincident				WOHLI	JUMDA
RW30				3300	4200
				8.5 NM	6.1 NM
				3300	GS 3.50° TCH 40
CATEGORY	A	B	C	D	
LPV DA	363-1 309 (300-1)		NA		
SAN FRANCISCO ALTIMETER SETTING MINIMUMS					
LPV DA	391-1 337 (400-1)		NA		

HALF MOON BAY, CALIFORNIA
Orig 07018

37°31'N-122°30'W

RNAV (GPS) Z RWY 30

HALF MOON BAY (HAF)