

RNAV (GPS) Y RWY 30

HALF MOON BAY (HAF)

APP CRS	Rwy ldg	4237
317°	TDZE	54
	Apt Elev	66

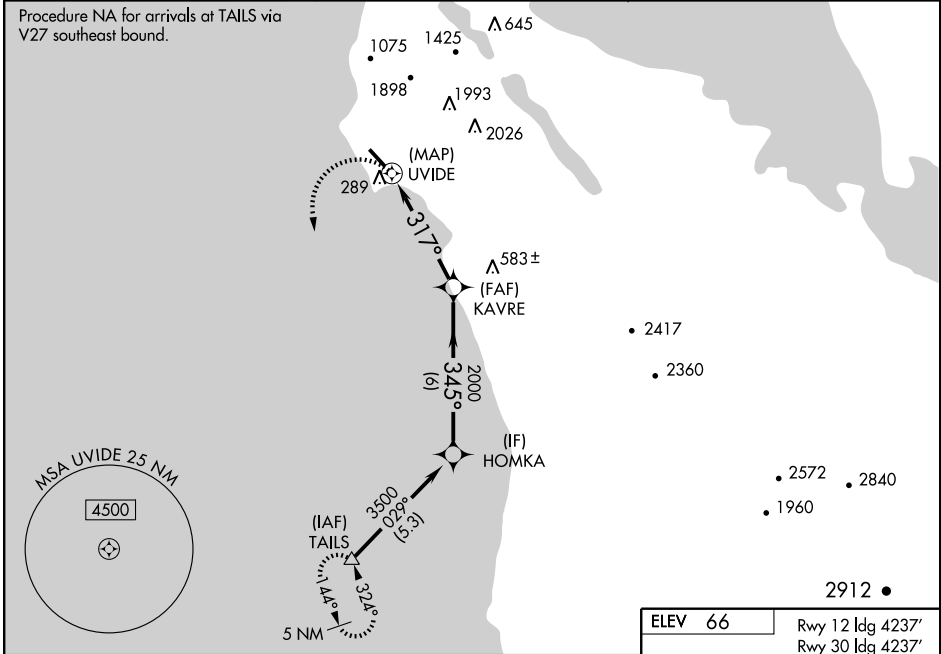
NA Circling NA east of Rwy 12/30.
 DME/DME RNP- 0.3 NA.
 Obtain local altimeter setting on CTAF; when not received, use San Francisco Intl altimeter setting.
 VDP NA when using San Francisco Intl altimeter setting.

MISSED APPROACH: Climbing left turn to 6000 direct TAILS and hold, continue climb-in-hold to 6000.

AWOS
127.275

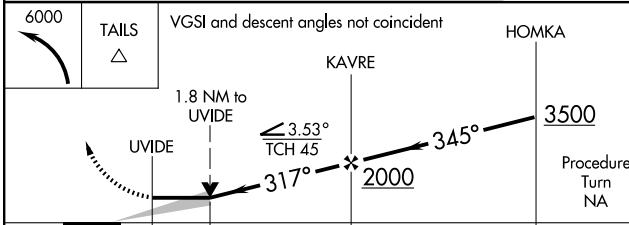
NORCAL APP CON
135.1 307.2

UNICOM
122.8 (CTAF)

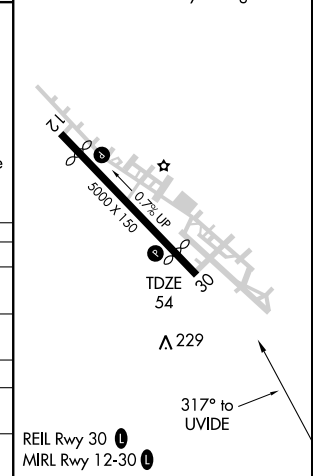


SW-2, 22 OCT 2009 to 19 NOV 2009

SW-2, 22 OCT 2009 to 19 NOV 2009



ELEV 66 Rwy 12 ldg 4237'
 Rwy 30 ldg 4237'



CATEGORY	A	B	C	D
LNAV MDA	800-1 746 (800-1)	800-1¼ 746 (800-1¼)		NA
CIRCLING	800-1 734 (800-1)	800-1¼ 734 (800-1¼)		NA
SAN FRANCISCO ALTIMETER SETTING MINIMUMS				
LNAV MDA	840-1 786 (800-1)	840-1¼ 786 (800-1¼)		NA
CIRCLING	840-1 774 (800-1)	840-1¼ 774 (800-1¼)		NA