

# RNAV (GPS) Y RWY 12

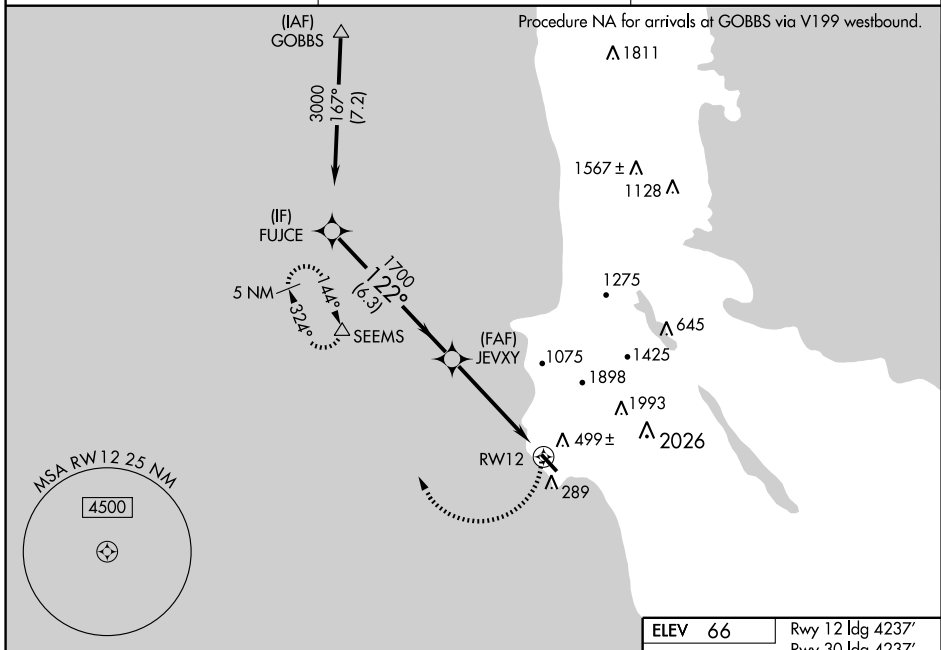
HALF MOON BAY (HAF)

APP CRS	Rwy ldg	<b>4237</b>
<b>122°</b>	TDZE	<b>59</b>
	Apt Elev	<b>66</b>

**NA** Circling NA east of Rwy 12/30. DME/DME RNP -0.3 NA. Visibility reduction by helicopters NA. VDP NA when using San Francisco Intl altimeter setting. Obtain local altimeter setting on CTAF; when not received, use San Francisco Intl altimeter setting.

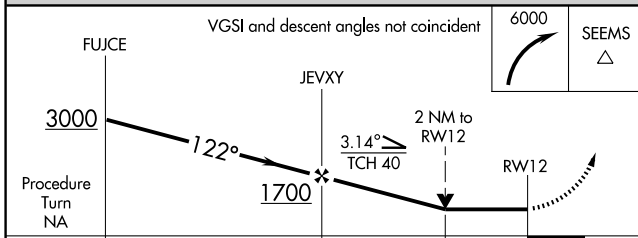
MISSED APPROACH: Climbing right turn to 6000 direct SEEMS and hold, continue climb-in-hold to 6000.

AWOS <b>127.275</b>	NORCAL APP CON <b>135.1 307.2</b>	UNICOM <b>122.8 (CTAF)</b>
------------------------	--------------------------------------	-------------------------------

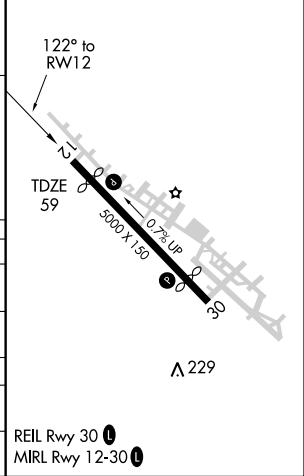


SW-2, 22 OCT 2009 to 19 NOV 2009

SW-2, 22 OCT 2009 to 19 NOV 2009



ELEV 66	Rwy 12 ldg 4237'
	Rwy 30 ldg 4237'



CATEGORY	A	B	C	D
LNAV MDA	760-1	701 (700-1)		NA
CIRCLING	760-1	694 (700-1)		NA
SAN FRANCISCO ALTIMETER SETTING MINIMUMS				
LNAV MDA	780-1	721 (800-1)		NA
CIRCLING	780-1	714 (800-1)		NA

REIL Rwy 30  
MIRL Rwy 12-30