

RNAV (GPS) RWY 32

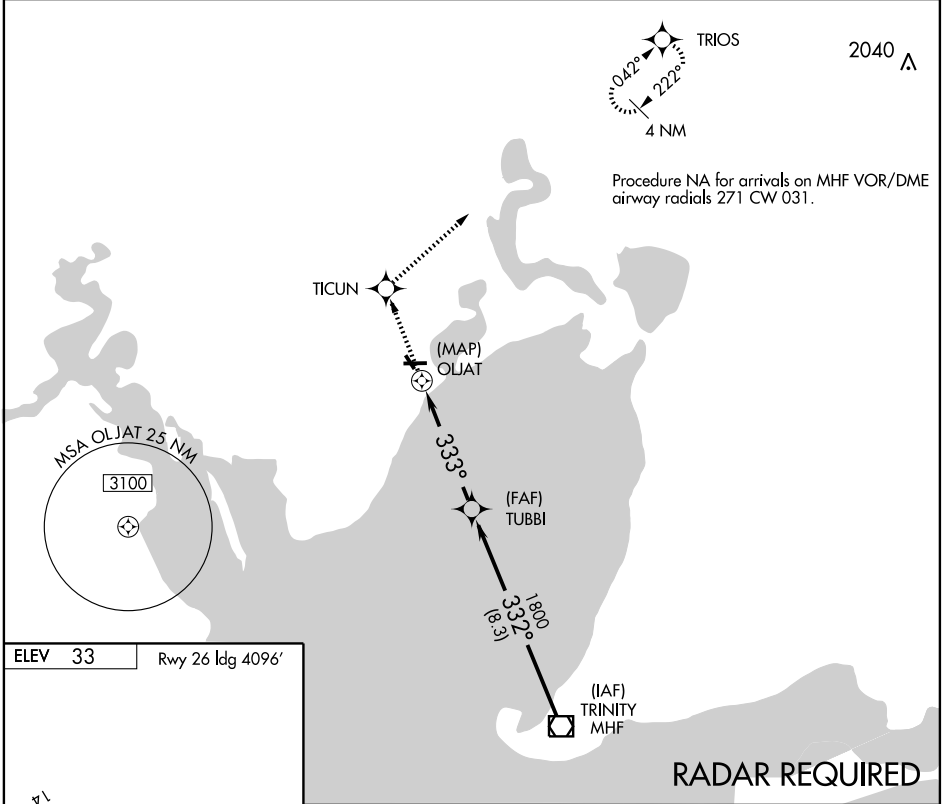
BAYTOWN/ RWJ AIRPARK (54T)

APP CRS 333°	Rwy Idg 3500
	TDZE 31
	Apt Elev 33

▲ NA Use Houston, TX (William P. Hobby) altimeter setting. GPS or RNP-0.3 required, DME/DME RNP-0.3 NA.
▼ Straight in minimums NA at night. Circling NA at night to Rwy 14/32.

MISSED APPROACH: Climb to 2000 direct TICUN then via 042° track to TRIOS and hold.

HOUSTON APP CON 134.45 284.0	UNICOM 122.7 (CTAF) 0
--	---------------------------------



SC-5, 22 OCT 2009 to 19 NOV 2009

SC-5, 22 OCT 2009 to 19 NOV 2009

