

# RNAV (GPS) RWY 26

BAYTOWN/RWJ AIRPARK (54T)

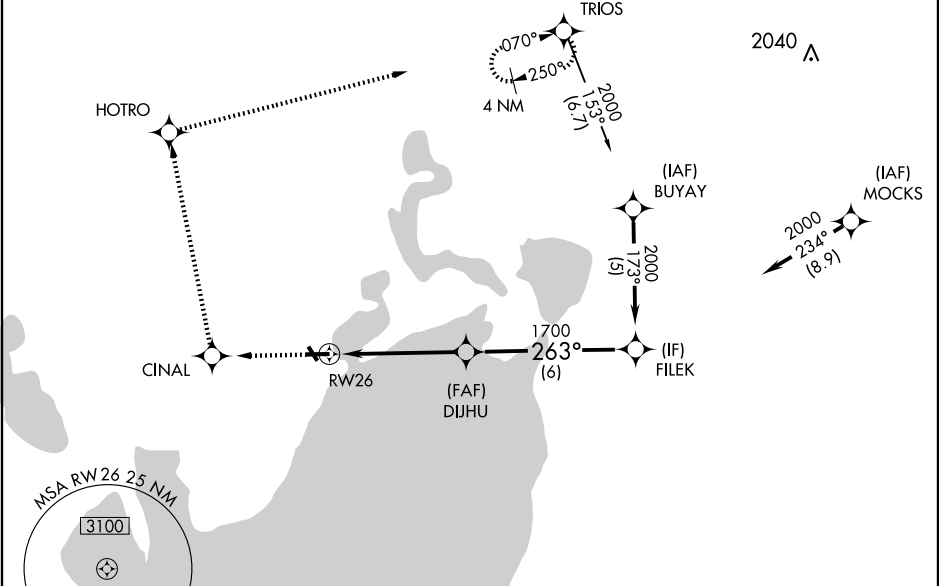
APP CRS	Rwy Idg	<b>4096</b>
<b>263°</b>	TDZE	<b>28</b>
	Apt Elev	<b>33</b>

**▲** NA Use Houston, TX (William P. Hobby) altimeter setting.  
**▼** DME/DME RNP-0.3 NA.  
 Circling NA at night to Rwy 14/32.

**MISSED APPROACH:** Climb to 2000 direct CINAL then right turn via 343° track to HOTRO and via 070° track to TRIOS and hold.

HOUSTON APP CON <b>134.45 284.0</b>	UNICOM <b>122.7 (CTAF) 0</b>
--	---------------------------------

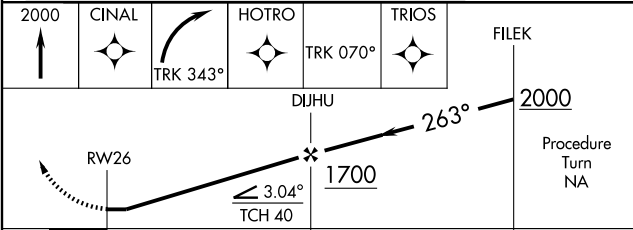
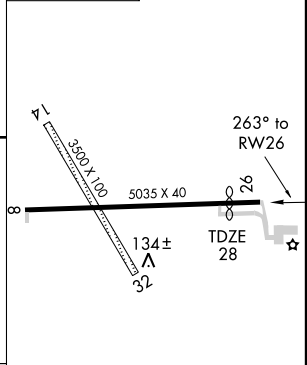
Procedure NA for arrivals at TRIOS via V222 west bound, and arrivals at MOCKS via V20 northeast bound.



SC-5, 22 OCT 2009 to 19 NOV 2009

SC-5, 22 OCT 2009 to 19 NOV 2009

ELEV 33	Rwy 26 Idg 4096'
---------	------------------



CATEGORY	A	B	C	D
LNVA MDA	460-1	432 (500-1)	460-1½ 432 (500-1½)	460-1½ 432 (500-1½)
CIRCLING	500-1	467 (500-1)	500-1½ 467 (500-1½)	600-2 567 (600-2)

LIRL Rwy 8-26 0