

# RNAV (GPS) RWY 28

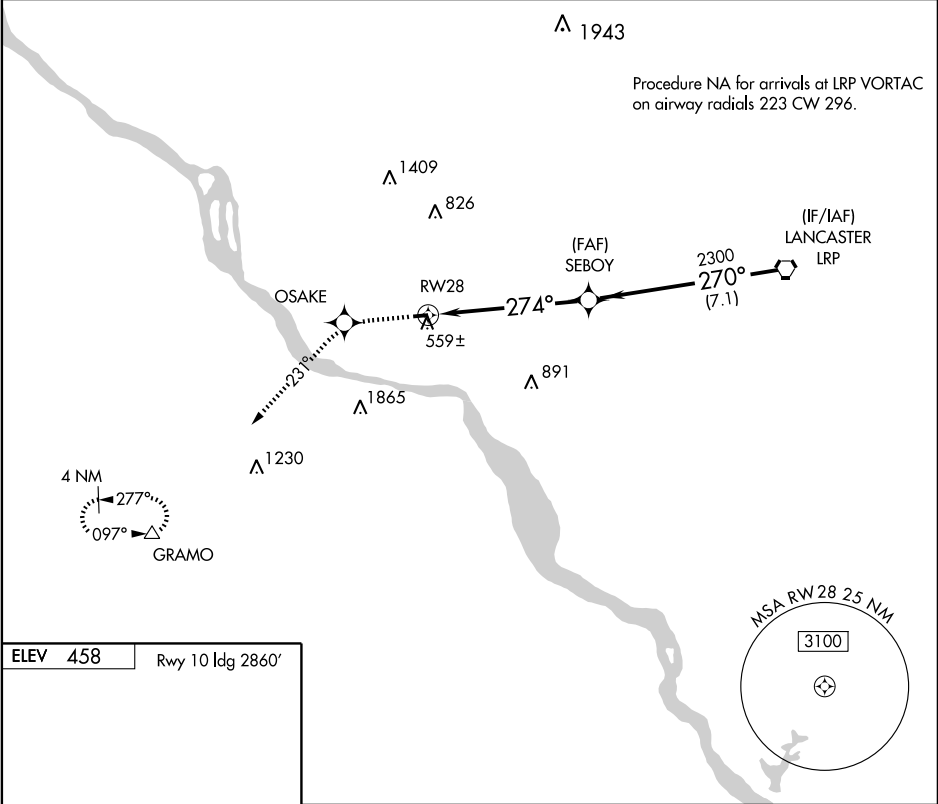
MOUNT JOY/MARIETTA, DONEGAL SPRINGS AIRPARK (N71)

APP CRS <b>274°</b>	Rwy Idg <b>3250</b>
	TDZE <b>458</b>
	Apt Elev <b>458</b>

**▽** DME/DME RNP-0.3 NA. Use Harrisburg Intl altimeter setting; when not received, use Fort Indiantown Gap altimeter setting and increase all MDAs 20 feet.

**MISSED APPROACH:** Climb to 3000 direct OSAKE and via 231° track to GRAMO and hold.

HARRISBURG APP CON <b>126.45 281.525</b>	HARRISBURG CLNC DEL <b>127.05</b>	UNICOM <b>122.8 (CTAF) 0</b>
---	--------------------------------------	---------------------------------



NE-4, 22 OCT 2009 to 19 NOV 2009

NE-4, 22 OCT 2009 to 19 NOV 2009

ELEV 458	Rwy 10 Idg 2860'
----------	------------------

MIRL Rwy 10-28 0

3000	OSAKE	GRAMO	VORTAC	
↑	✧	△		
	231° TRK			
	SEBOY		2600	Procedure Turn NA
	RWY 28	2300		
	274°	270°		
	5.8 NM	7.1 NM		
	≤ 3.05° TCH 40			
CATEGORY	A	B	C	D
LNAV MDA	900 - 1	442 (500-1)	NA	
CIRCLING	940 - 1 482 (500-1)	960 - 1 502 (600-1)	NA	