

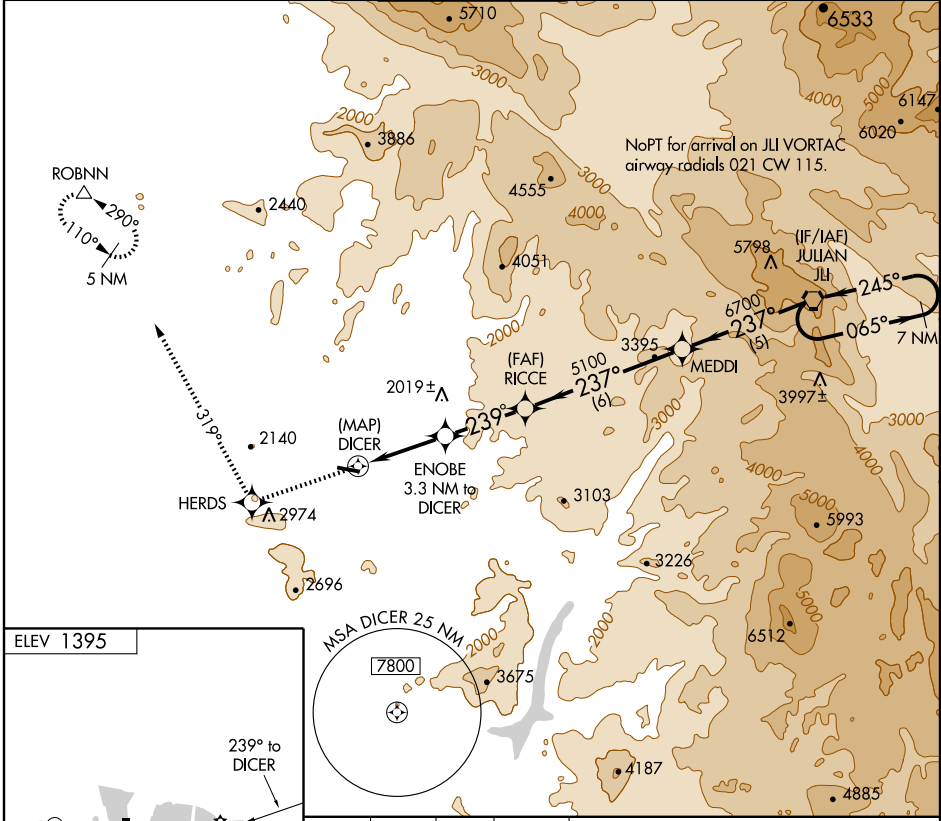
**RNAV (GPS)-B**  
RAMONA (R.NM)

APP CRS <b>239°</b>	Rwy Idg TDZE Apt Elev	<b>N/A</b> <b>N/A</b> <b>1395</b>
------------------------	-----------------------------	---

**▽** DME/DME RNP: 0.3 NA.  
**▲** Circling NA north of Rwy 9-27.  
When local altimeter setting not received, use Gillespie Field altimeter setting and increase all MDA 180 feet.

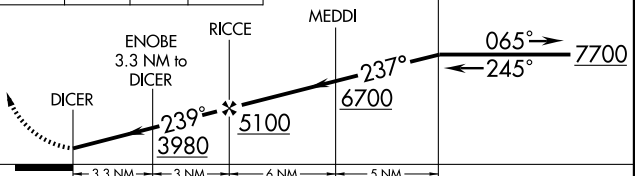
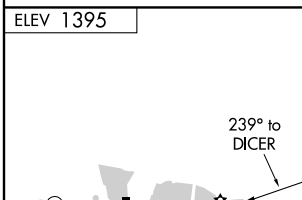
MISSED APPROACH: Climb to 5000 direct HERDS and via track 319° to ROBNN and hold.

ATIS <b>132.025</b>	SOCAL APP CON <b>132.2 269.1</b>	<b>RAMONA TOWER*</b> <b>119.875</b> (CTAF) <b>0</b>	GND CON <b>121.65</b>	UNICOM <b>122.95</b>
------------------------	-------------------------------------	--	--------------------------	-------------------------



SW-3, 22 OCT 2009 to 19 NOV 2009

SW-3, 22 OCT 2009 to 19 NOV 2009



REIL Rwy 27 **0**  
MIRL Rwy 9-27 **0**

CATEGORY	A	B	C	D
CIRCLING	2780-1¼ 1385 (1400-1¼)	2780-1½ 1385 (1400-1½)	2780-3 1385 (1400-3)	NA