

ERIE, COLORADO

AL-6664 (FAA)

VOR/DME or GPS-A

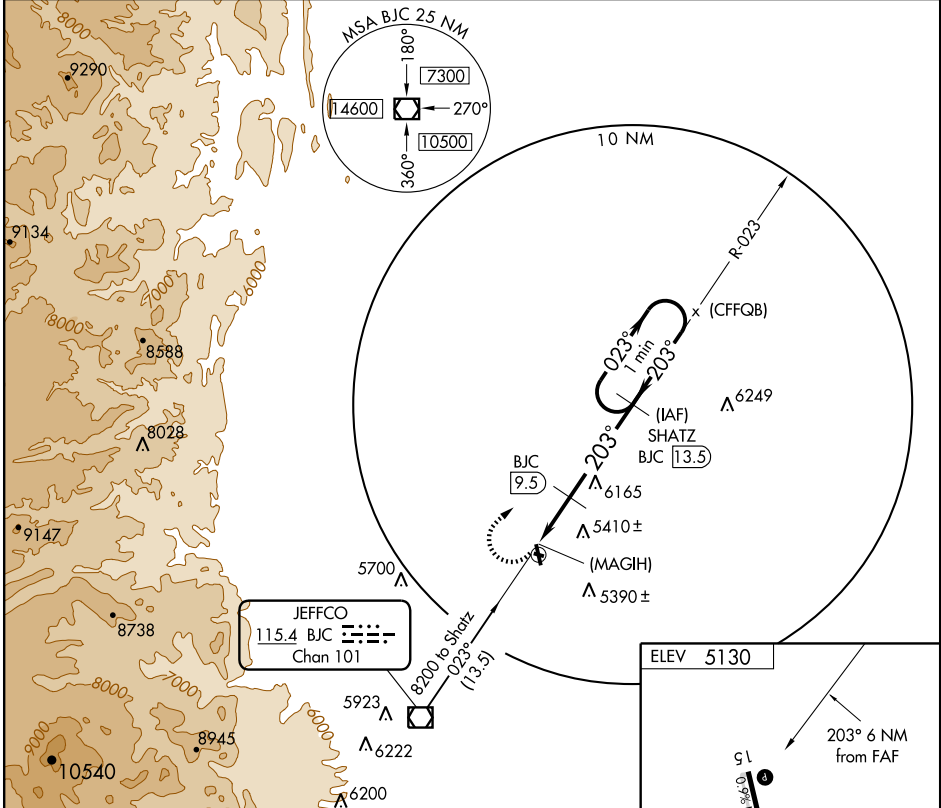
ERIE MUNI (EIK)

VOR/DME BJC 115.4 Chan 101	APP CRS 203°	Rwy Idg TDZE Apt Elev N/A N/A 5130
-----------------------------------------	------------------------	---------------------------------------------------------------------

NA Use Denver Intl altimeter setting.

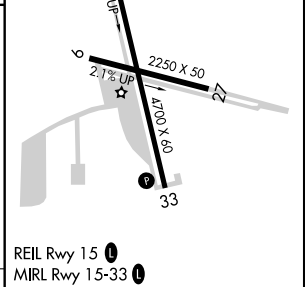
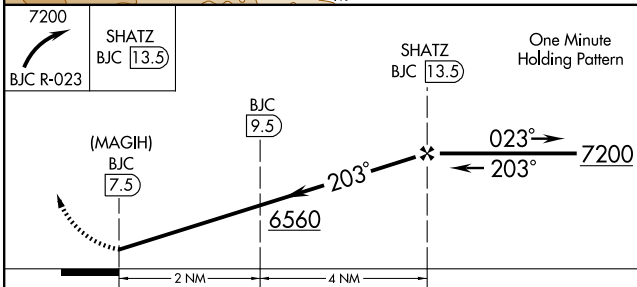
 MISSED APPROACH: Climbing right turn to 7200 via BJC R-023to SHATZ/13.5 DME and hold.

AWOS-3 133.825	DENVER APP CON 126.1 360.75	UNICOM 123.0 (CTAF)
--------------------------	---------------------------------------	-------------------------------



SW-1, 22 OCT 2009 to 19 NOV 2009

SW-1, 22 OCT 2009 to 19 NOV 2009



CATEGORY	A	B	C	D	Knots	60	90	120	150	180
CIRCLING	5840-1 710 (800-1)	5860-1 730 (800-1)	5880-2 ¼ 750 (800-2 ¼)	NA	Min:Sec					

ERIE, COLORADO
Orig 08157

40°01'N-105°03'W

VOR/DME or GPS-A

ERIE MUNI (EIK)