

PHILLIPS, WISCONSIN

AL-6663 (FAA)

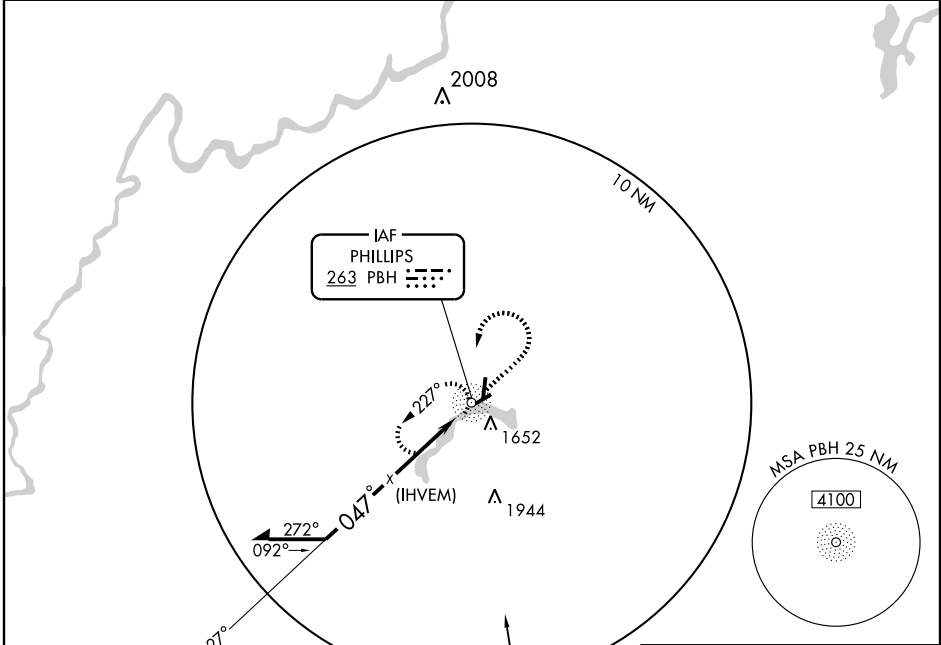
NDB PBH	APP CRS	Rwy Idg	<b>3950</b>
<b>263</b>	<b>047°</b>	TDZE	<b>1471</b>
		Apt Elev	<b>1497</b>

**NDB or GPS RWY 6**  
PHILLIPS/ PRICE COUNTY (PBH)

▼ If local altimeter setting not received, use Minocqua-Woodruff altimeter setting and increase all MDA 100 ft.

MISSED APPROACH: Climb to 3300 then left turn direct PBH NDB and hold.

AWOS-3 <b>125.875</b>	MINNEAPOLIS CENTER <b>133.65 281.5</b>	UNICOM <b>122.8 (CTAF) 0</b>
--------------------------	---	---------------------------------

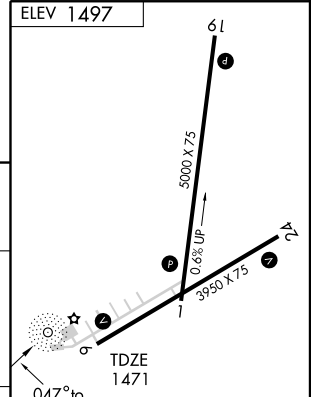


EC-3, 22 OCT 2009 to 19 NOV 2009

EC-3, 22 OCT 2009 to 19 NOV 2009



Remain within 10 NM	NDB	3300	PBH
	(IHVEM)	↑	263



CATEGORY	A	B	C	D
S-6	2100-1	629 (700-1)	2100-1¼ 629 (700-1¼)	NA
CIRCLING	2100-1	603 (700-1)	2100-1¼ 603 (700-1¼)	NA

REIL Rwy 1, 19 and 24	0				
MIRL Rwy 1-19 and 6-24	0				
Knots	60	90	120	150	180
Min:Sec					

PHILLIPS, WISCONSIN  
Amdt 1A 08185

45° 43' N - 90° 24' W

PHILLIPS/ PRICE COUNTY (PBH)  
**NDB or GPS RWY 6**