

PHILLIPS, WISCONSIN

AL-6663 (FAA)

NDB PBH <b>263</b>	APP CRS <b>240°</b>	Rwy Idg TDZE Apt Elev	<b>3950</b> <b>1472</b> <b>1497</b>
-----------------------	------------------------	-----------------------------	---

# NDB or GPS RWY 24

PHILLIPS/ PRICE COUNTY (PBH)

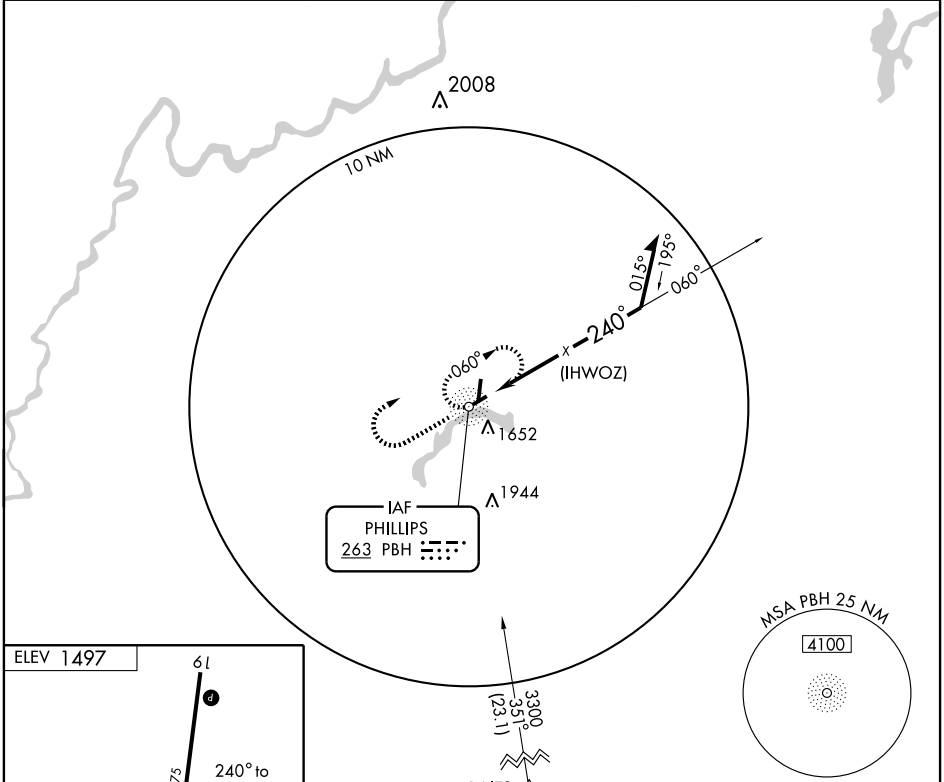
▼ If local altimeter setting not received, use Minocqua-Woodruff altimeter setting and increase all MDA 100 ft.

MISSED APPROACH: Climb to 3300 then right turn direct PBH NDB and hold.

AWOS-3  
**125.875**

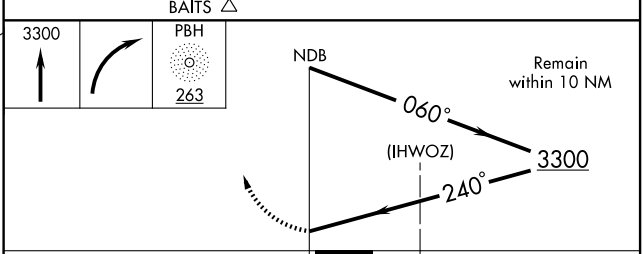
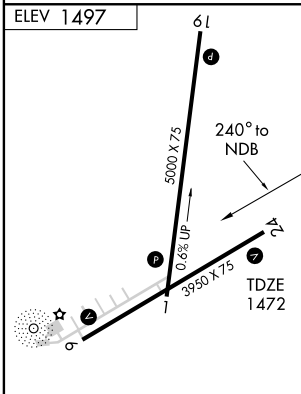
MINNEAPOLIS CENTER  
**133.65 281.5**

UNICOM  
**122.8 (CTAF) 0**



EC-3, 22 OCT 2009 to 19 NOV 2009

EC-3, 22 OCT 2009 to 19 NOV 2009



REIL Rwy 1, 19 and 24 0  
MIRL Rwy 1-19 and 6-24 0

Knots	60	90	120	150	180
Min:Sec					

CATEGORY	A	B	C	D
S-24	2140-1	668 (700-1)	2140-1¾ 668 (700-1¾)	NA
CIRCLING	2140-1	643 (700-1)	2140-1¾ 643 (700-1¾)	NA

PHILLIPS, WISCONSIN  
Amdt 3A 08185

45° 43'N-90° 24'W

# PHILLIPS/ PRICE COUNTY (PBH)

## NDB or GPS RWY 24