

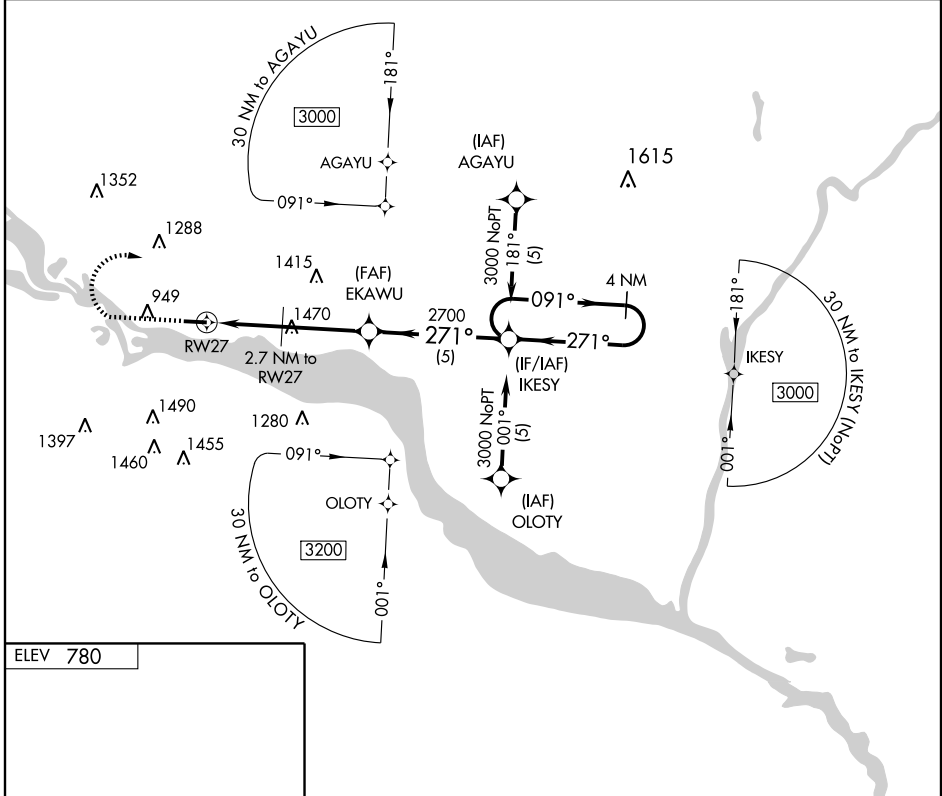
# RNAV (GPS) RWY 27

RED WING RGNL (RGK)

APP CRS <b>271°</b>	Rwy Idg <b>5010</b>
	TDZE <b>778</b>
	Apt Elev <b>780</b>

**NA** GPS or RNP-0.3 required. DME/DME RNP-0.3 NA. MISSED APPROACH: Climb to 2100, then climbing right turn to 3000 direct IKESY WP and hold.

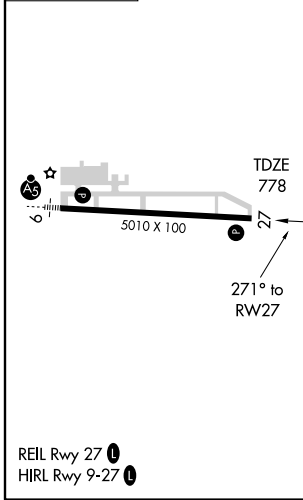
AWOS-3 <b>119.25</b>	MINNEAPOLIS APP CON <b>121.2 357.4</b>	UNICOM <b>123.05 (CTAF)</b>
-------------------------	---	--------------------------------



NC-1, 22 OCT 2009 to 19 NOV 2009

NC-1, 22 OCT 2009 to 19 NOV 2009

ELEV 780



	2100	3000	IKESY	IKESY	IKESY	4 NM Holding Pattern
	↑	↷	✧	✧	✧	
			2.7 NM to RW27	EKAWU		
			2.1 NM to RW27	3.14° TCH 45	1720	271°
			2.1 NM	0.6 NM	3.1 NM	5 NM
CATEGORY	A	B	C	D		
RNAV MDA	1520-1	742 (800-1)	1520-2¼ 742 (800-2¼)	NA		
CIRCLING	1520-1	740 (800-1)	1540-2¼ 760 (800-2¼)	NA		