

WHEATON, MINNESOTA

AL-6660 (FAA)

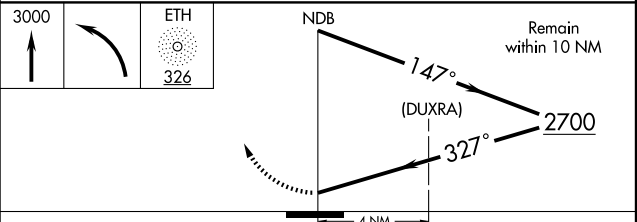
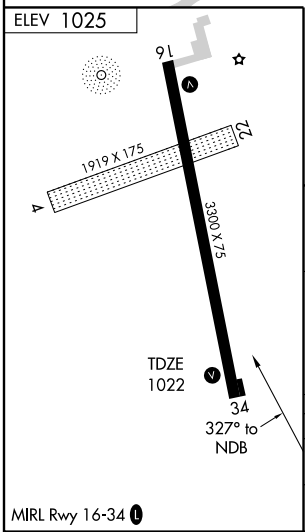
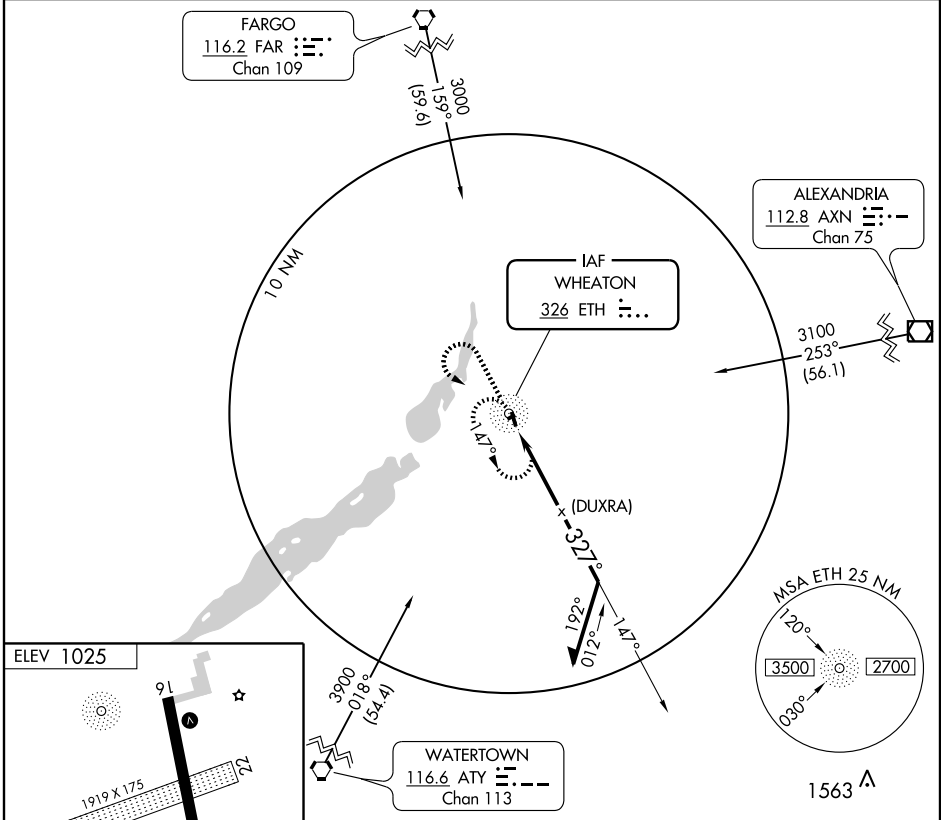
# NDB or GPS RWY 34

WHEATON MUNI (ETH)

NDB ETH <b>326</b>	APP CRS <b>327°</b>	Rwy Idg <b>3300</b>
		TDZE <b>1022</b>
		Apt Elev <b>1025</b>

<p>NA</p>	<p>MISSED APPROACH: Climb to 3000 then left turn direct ETH NDB and hold.</p>		
-----------	---	--	--

AWOS-3 <b>326</b>	MINNEAPOLIS CENTER <b>126.1 269.2</b>	PRINCETON RADIO <b>122.25</b>	UNICOM <b>122.8 (CTAF) 0</b>
----------------------	--	----------------------------------	---------------------------------



CATEGORY	A	B	C	D
S-34	1540-1	518 (600-1)	1540-1½ 518 (600-1½)	NA
CIRCLING	1540-1	515 (600-1)	1540-1½ 515 (600-1½)	NA

WHEATON, MINNESOTA  
Amdt 1A 09015

45°47'N-96°33'W

# WHEATON MUNI (ETH)

## NDB or GPS RWY 34

NC-1, 22 OCT 2009 to 19 NOV 2009

NC-1, 22 OCT 2009 to 19 NOV 2009