

VOR/DME MYV 110.8 Chan 45	APP CRS 058°	Rwy Idg TDZE Apt Elev 3152	N/A N/A
---	------------------------	---	--------------------------

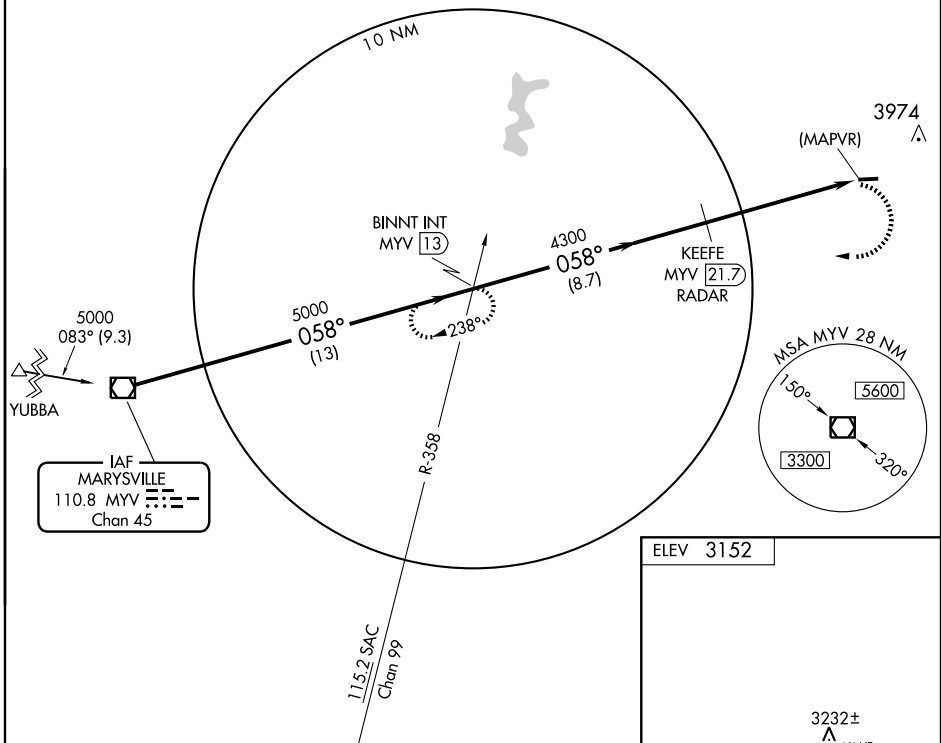
VOR or GPS-A

GRASS VALLEY/ NEVADA COUNTY AIR PARK (GOO)

<p>NA</p> <p>When local altimeter setting not received, use Emigrant Gap altimeter setting. Circling not authorized north of Rwy 7-25.</p>	<p>MISSED APPROACH: Climbing right turn to 5000 via MYV R-058 to BINNT Int/MYV 13 DME and hold.</p>
---	---

<p>AWOS-3 121.325</p>	<p>NORCAL APP CON 125.4 259.1</p>	<p>UNICOM 122.725 (CTAF)</p>
----------------------------------	--	---

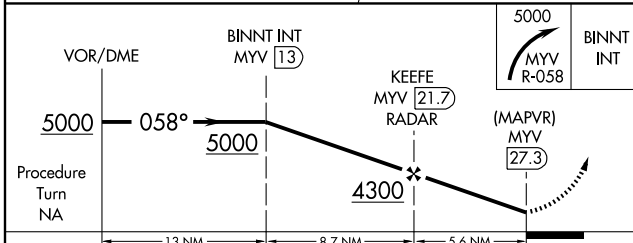
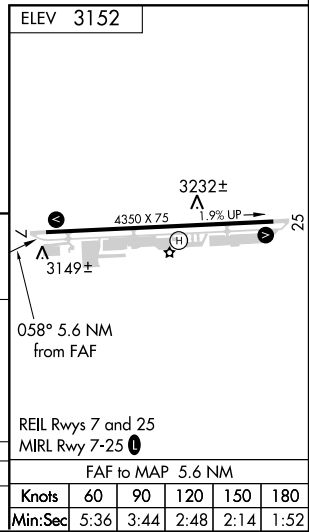
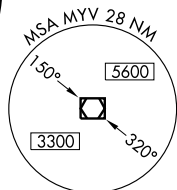
DME or RADAR REQUIRED



SW-2, 22 OCT 2009 to 19 NOV 2009

SW-2, 22 OCT 2009 to 19 NOV 2009

IAF MARYSVILLE
110.8 MYV
Chan 45



CATEGORY	A	B	C	D
CIRCLING	4280-1¼ 1128 (1200-1¼)	4280-1½ 1128 (1200-1½)	4280-3 1128 (1200-3)	NA