

APP CRS
071°

Rwy Idg **4350**
TDZE **3128**
Apt Elev **3152**

GPS RWY 7

GRASS VALLEY/ NEVADA COUNTY AIR PARK (GOO)

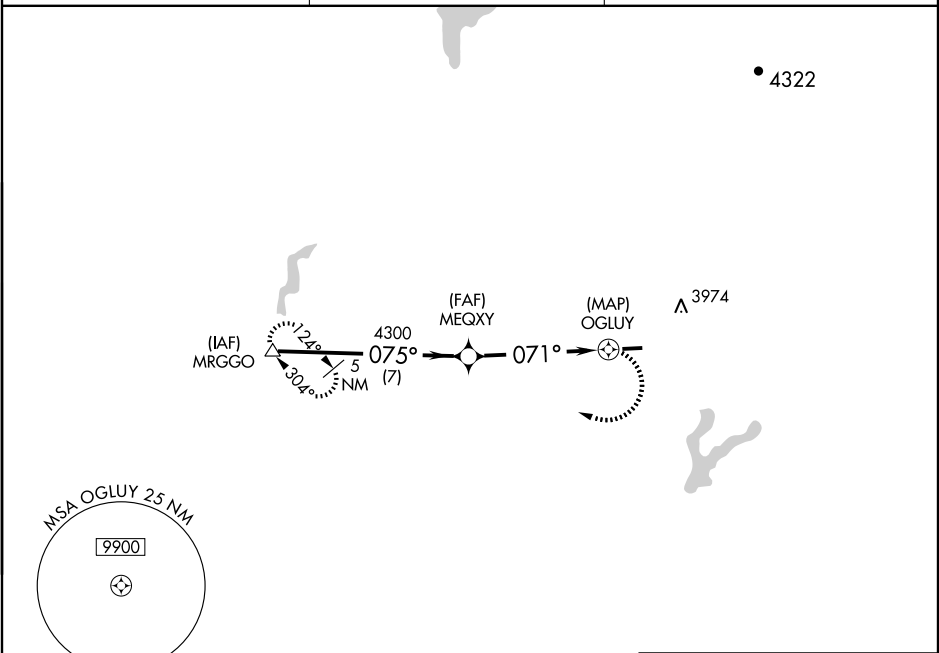
▽ When local altimeter setting not received, use Emigrant Gap altimeter setting.
△ NA Circling not authorized north of Rwy 7-25.

MISSED APPROACH: Climbing right turn to 6000 direct MRGGO WP and hold.

AWOS-3
121.325

NORCAL APP CON
125.4 259.1

UNICOM
122.725 (CTAF)



SW-2, 22 OCT 2009 to 19 NOV 2009

SW-2, 22 OCT 2009 to 19 NOV 2009

| | | | | |
|---|-----------------------|-------------------------|-------------------------|----|
| ELEV 3152 | | | | |
| MRGGO | | | | |
| | | | | |
| | | | | |
| CATEGORY | A | B | C | D |
| S-7 | 3540-1 | 412 (400-1) | 3540-1¼ 412 (400-1¼) | NA |
| CIRCLING | 3680-1 | 528 (600-1) | 3680-1½ 528 (600-1½) | NA |
| EMIGRANT GAP ALTIMETER SETTING MINIMUMS | | | | |
| S-7 | 3880-1 752 (800-1) | 3880-1¼ 752 (800-1¼) | 3880-2¼ 752 (800-2¼) | NA |
| CIRCLING | 4020-1 868 (900-1) | 4020-1¼ 868 (900-1¼) | 4020-2½ 868 (900-2½) | NA |
| REIL Rws 7 and 25 MIRL Rwy 7-25 | | | | |