

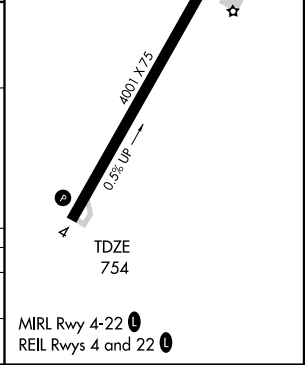
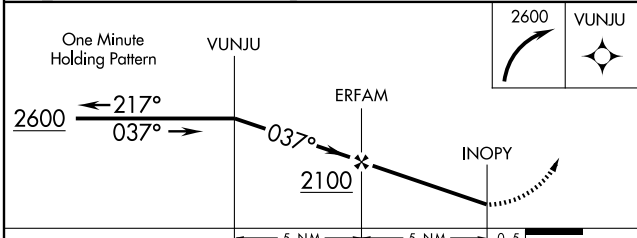
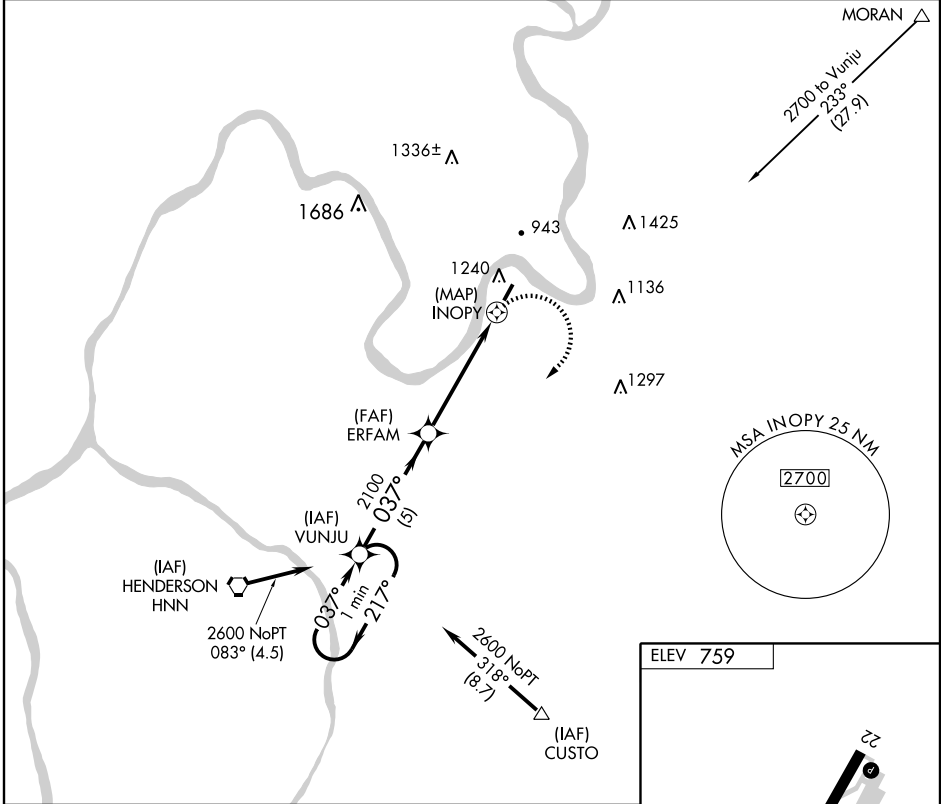
GPS RWY 4

RAVENSWOOD / JACKSON COUNTY (I18)

APP CRS 037°	Rwy Idg 4001
	TDZE 754
	Apt Elev 759

	MISSED APPROACH: Climbing right turn to 2600 direct VUNJU WP and hold.
--	--

AWOS-2 121.3	HUNTINGTON APP CON 128.4 270.1	UNICOM 122.8 (CTAF)
------------------------	--	-------------------------------



CATEGORY	A	B	C	D
S-4	1400-1	646 (700-1)	1400-1¼ 646 (700-1¼)	NA
CIRCLING	1600-1 841 (900-1)	1600-1¼ 841 (900-1¼)	1600-2½ 841 (900-2½)	NA

GPS RWY 4

NE-4, 22 OCT 2009 to 19 NOV 2009

NE-4, 22 OCT 2009 to 19 NOV 2009