

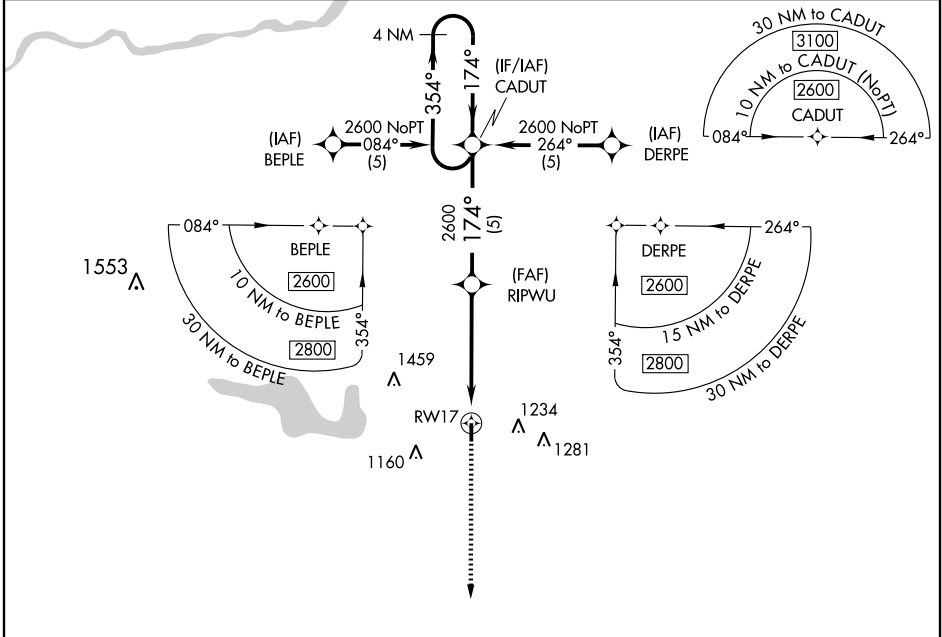
# RNAV (GPS) RWY 17

CHANDLER RGNL (CQB)

APP CRS	Rwy Idg	<b>4000</b>
<b>174°</b>	TDZE	<b>979</b>
	Apt Elev	<b>984</b>

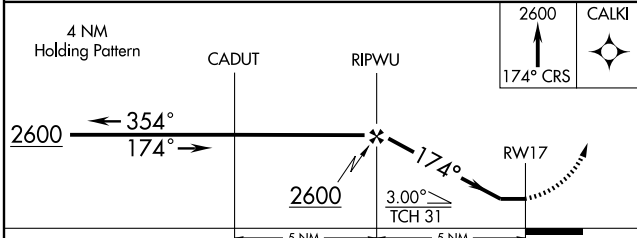
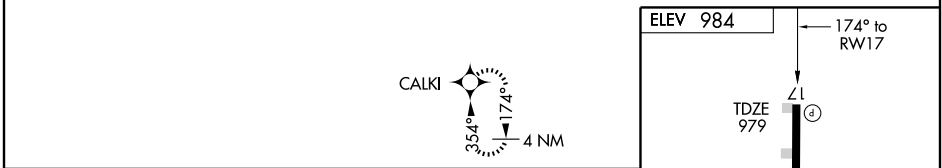
**▼** If local altimeter setting not received, use Shawnee Rgnl altimeter setting and increase all MDAs 80 feet.  
**▲ NA** MISSED APPROACH: Climb to 2600 via 174° course to CALKI WP and hold.

AWOS-3 <b>119.275</b>	KANSAS CITY CENTER <b>128.3 291.7</b>	CTAF <b>122.9</b>
--------------------------	--	----------------------



SC-1, 22 OCT 2009 to 19 NOV 2009

SC-1, 22 OCT 2009 to 19 NOV 2009



ELEV 984	← 174° to RWY 17
TDZE 979	①
4000 X 60	②
③	④
⑤	⑥
⑦	⑧
⑨	⑩
⑪	⑫
⑬	⑭
⑮	⑯
⑰	⑱
⑲	⑳
㉑	㉒
㉓	㉔
㉕	㉖
㉗	㉘
㉙	㉚
㉛	㉜
㉝	㉞
㉟	㊱
㊲	㊳
㊴	㊵
㊶	㊷
㊸	㊹
㊺	㊻
㊼	㊽
㊾	㊿

MRL Rwy 17-35

CATEGORY	A	B	C	D
LNVA MDA	1300-1	319 (400-1)		NA
CIRCLING	1380-1 396 (400-1)	1440-1 456 (500-1)	1540-1½ 556 (600-1½)	NA