

SANDERSVILLE, GEORGIA

AL-6655 (FAA)

RNAV (GPS) RWY 12

SANDERSVILLE/ KAOLIN FIELD (OKZ)

APP CRS	Rwy Idg	5015
125°	TDZE	430
	Apt Elev	438

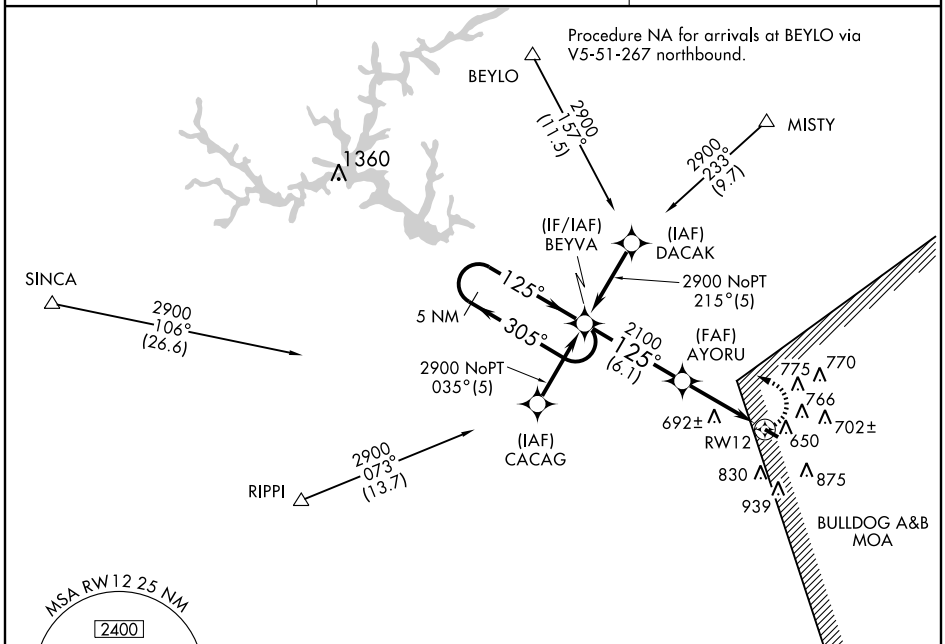
⚠ When local altimeter setting not received, use Swainsboro altimeter setting and increase all MDAs 100 feet, and all Cat. C visibilities ¼ mile.
⚠ NA VDP NA when using Swainsboro altimeter setting. DME/DME RNP-0.3 NA.

MISSED APPROACH: Climbing left turn to 2900 direct BEYVA and hold.

AWOS-3
120.575

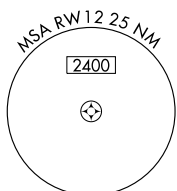
ATLANTA APP CON ★
124.2 279.6

UNICOM
123.0 (CTAF) ①

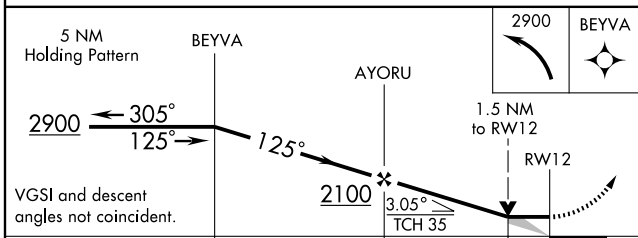
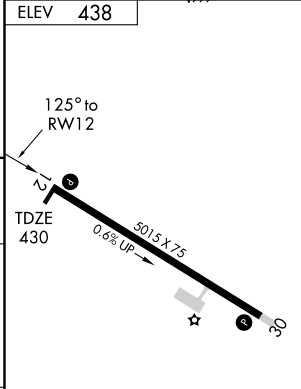


SE-4, 22 OCT 2009 to 19 NOV 2009

SE-4, 22 OCT 2009 to 19 NOV 2009



ELEV 438



CATEGORY	A	B	C	D
LNVA MDA	920-1 490 (500-1)		920-1¼ 490 (500-1¼)	NA
CIRCLING	1000-1	562 (600-1)	1120-2 682 (700-2)	NA

MIRL Rwy 12-30 ①

SANDERSVILLE, GEORGIA
Amdt 1 07354

32° 58' N-82° 50' W

SANDERSVILLE/ KAOLIN FIELD (OKZ)
RNAV (GPS) RWY 12