

RNAV (GPS) RWY 33

WAHPETON/HARRY STERN (BWP)

APP CRS 331°	Rwy Idg 5100
	TDZE 967
	Apt Elev 968

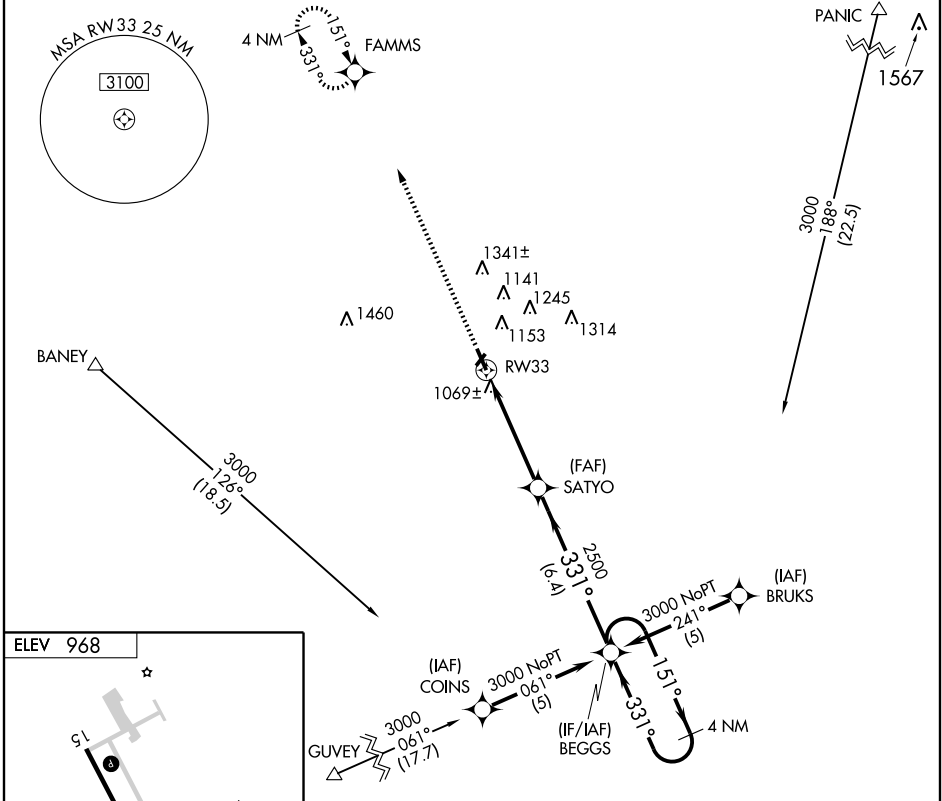
NA DME/DME RNP-0.3 NA.
If local altimeter setting not received, use Fergus Falls, MN altimeter setting and increase all MDAs 80 feet.
VDP NA when using Fergus Falls, MN altimeter setting.

MISSED APPROACH: Climb to 3000 direct FAMMS and hold.

AWOS-3
127.875

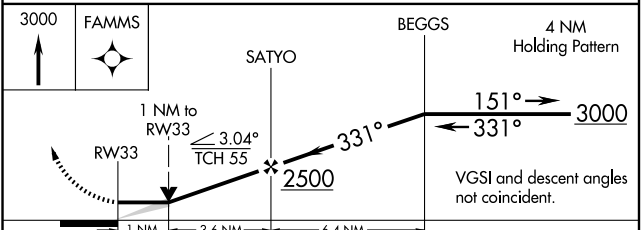
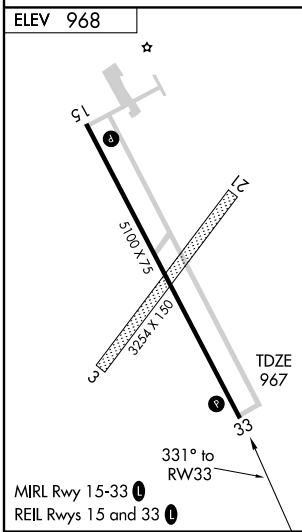
GRAND FORKS RADIO
122.425

UNICOM
123.0 (CTAF)



NC-1, 22 OCT 2009 to 19 NOV 2009

NC-1, 22 OCT 2009 to 19 NOV 2009



CATEGORY	A	B	C	D
LNVA MDA	1320-1 353 (400-1)			1320-1¼ 353 (400-1¼)
CIRCLING	1520-1	552 (600-1)	1520-1½ 552 (600-1½)	1560-2 592 (600-2)