

# RNAV (GPS) RWY 15

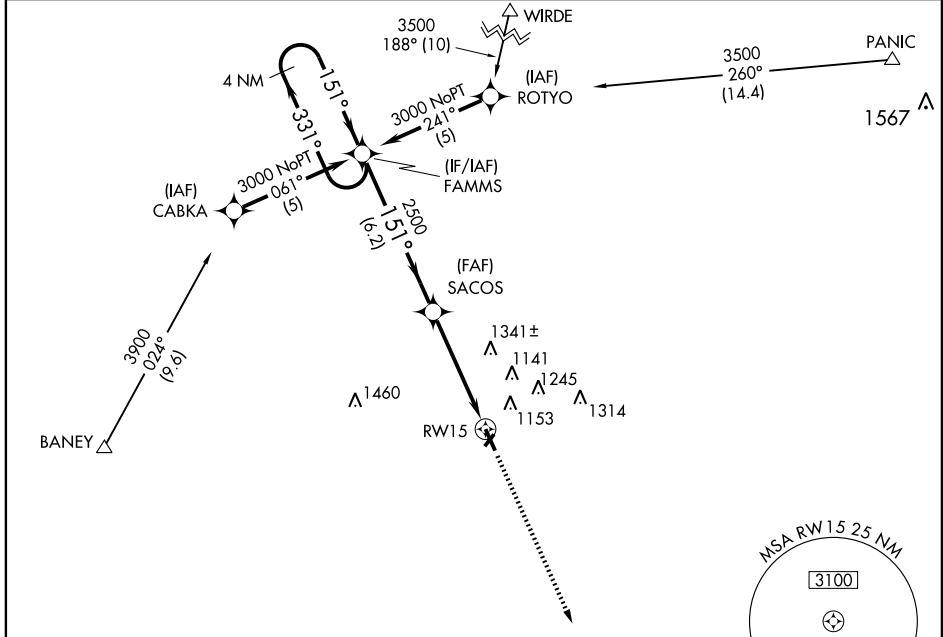
WAHPETON/HARRY STERN (BWP)

APP CRS <b>151°</b>	Rwy Idg <b>5100</b>
	TDZE <b>968</b>
	Apt Elev <b>968</b>

**NA** DME/DME RNP-0.3 NA. Circling to Rwy 3/21 NA at night.  
 If local altimeter setting not received, use Fergus Falls, MN altimeter setting and increase all MDAs 80 feet.  
 VDP NA when using Fergus Falls, MN altimeter setting.

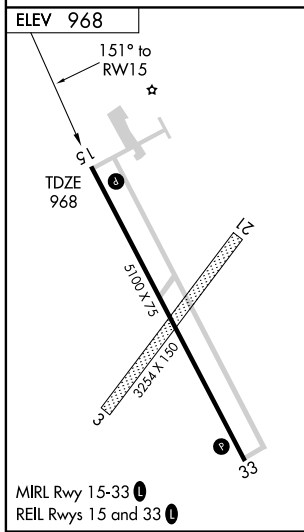
**MISSED APPROACH:** Climb to 3000 direct BEGGS and hold.

AWOS-3 <b>127.875</b>	GRAND FORKS RADIO <b>122.425</b>	UNICOM <b>123.0 (CTAF) 0</b>
--------------------------	-------------------------------------	---------------------------------



NC-1, 22 OCT 2009 to 19 NOV 2009

NC-1, 22 OCT 2009 to 19 NOV 2009



ELEV 968

151° to RWY 15

TDZE 968

5100 x 75

3254 x 130

MRL Rwy 15-33

REL Rwy 15 and 33

BEGGS

4 NM

MSA RWY 15 25 NM

3100

	4 NM Holding Pattern	FAMMS	3000	BEGGS
	← 331°	→ 151°	151°	4 NM
		2500	1.6 NM to RWY 15	
		3.04° TCH 55		
	6.2 NM	3 NM	1.6 NM	
VGSI and descent angles not coincident.				

CATEGORY	A	B	C	D
LNAV MDA	1500-1	532 (600-1)	1500-1½ 532 (600-1½)	1500-1¾ 532 (600-1¾)
CIRCLING	1520-1	552 (600-1)	1520-1½ 552 (600-1½)	1560-2 592 (600-2)