

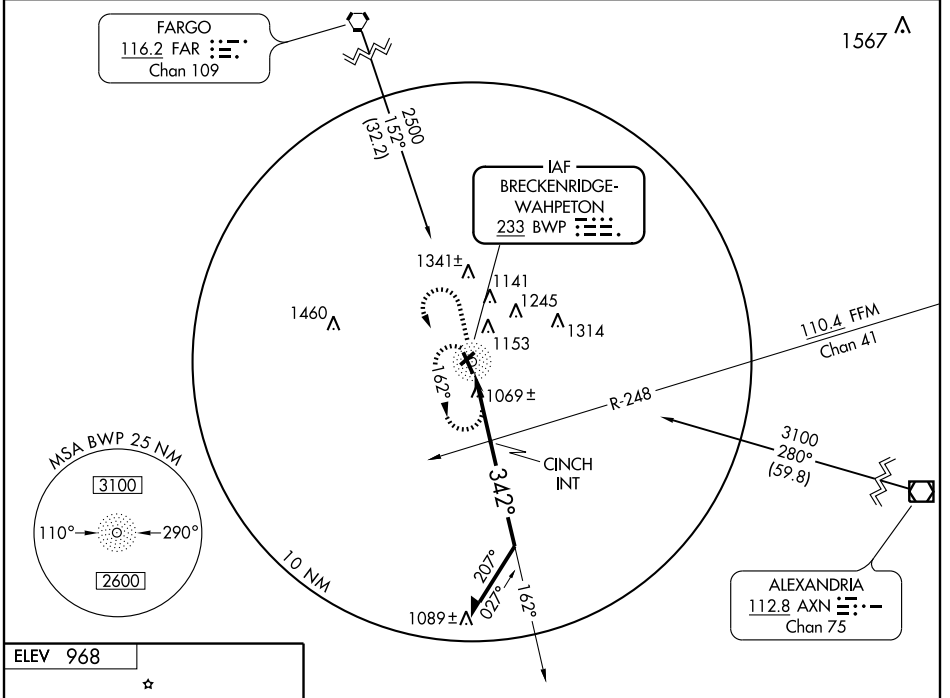
# NDB RWY 33

WAHPETON/HARRY STERN (BWP)

NDB BWP <b>233</b>	APP CRS <b>342°</b>	Rwy Idg TDZE Apt Elev	<b>5100</b> <b>967</b> <b>968</b>
-----------------------	------------------------	-----------------------------	---

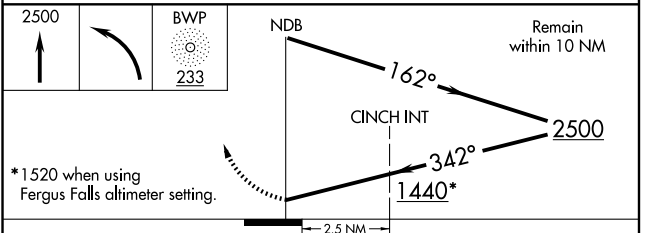
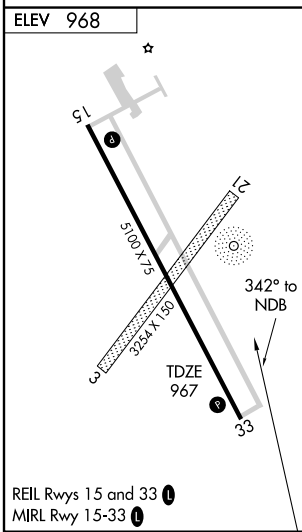
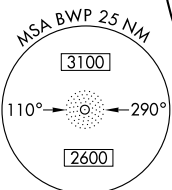
**▽** If local altimeter setting not received, use Fergus Falls, MN altimeter setting and increase all MDAs 80 feet. **MISSED APPROACH:** Climb to 2500 then left turn direct BWP NDB and hold.

AWOS-3 <b>127.875</b>	GRAND FORKS RADIO <b>122.425</b>	UNICOM <b>123.0</b> (CTAF) <b>📻</b>
--------------------------	-------------------------------------	--



NC-1, 22 OCT 2009 to 19 NOV 2009

NC-1, 22 OCT 2009 to 19 NOV 2009



CATEGORY	A	B	C	D
S-33	1440-1	473 (500-1)	1440-1¼ 473 (500-1¼)	1440-1½ 473 (500-1½)
CIRCLING	1520-1	552 (600-1)	1520-1½ 552 (600-1½)	1560-2 592 (600-2)
CINCH FIX MINIMUMS				
S-33	1380-1	413 (500-1)	1380-1¼ 413 (500-1¼)	
CIRCLING	1520-1	552 (600-1)	1520-1½ 552 (600-1½)	1560-2 592 (600-2)