

|   |                        |   |
|---|------------------------|---|
| VORTAC FGT<br><b>115.7</b><br>Chan <b>104</b> | APP CRS<br><b>085°</b> | Rwy Idg <b>4098</b><br>TDZE <b>960</b><br>Apt Elev <b>960</b> |
|---|------------------------|---|

# VOR or GPS RWY 12

MINNEAPOLIS/AIRLAKE (LVN)

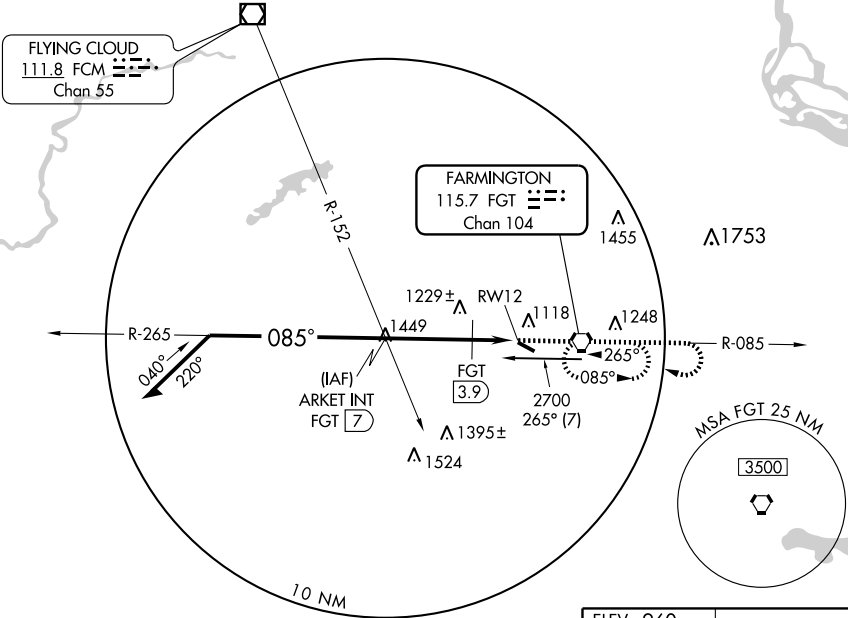
MISSED APPROACH: Climb to 2800 then right turn direct FGT VORTAC and hold.

AWOS-3  
**118.0**

MINNEAPOLIS APP CON  
**134.7 284.7**

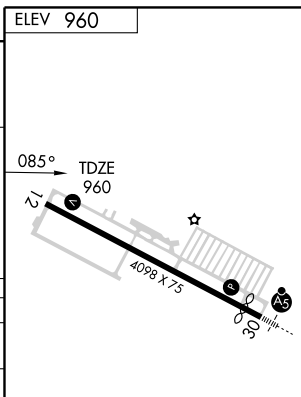
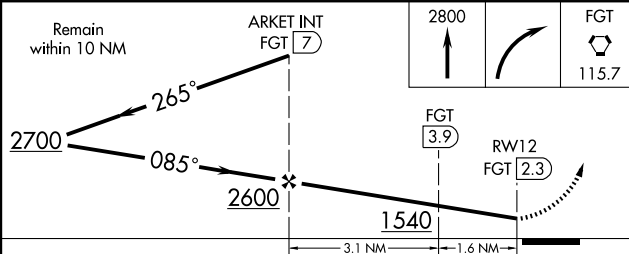
CLNC DEL  
**118.95**

UNICOM  
**123.0 (CTAF) 0**



NC-1, 22 OCT 2009 to 19 NOV 2009

NC-1, 22 OCT 2009 to 19 NOV 2009



| CATEGORY     | A      |             | B            |         | C            |         | D            |  |
|--------------|--------|-------------|--------------|---------|--------------|---------|--------------|--|
|              | 1540-1 | 580 (600-1) | 580 (600-1)  | 1540-1½ | 580 (600-1½) | 1540-1¾ | 580 (600-1¾) |  |
| S-12         | 1540-1 | 580 (600-1) | 580 (600-1)  | 1540-1½ | 580 (600-1½) | 1540-1¾ | 580 (600-1¾) |  |
| CIRCLING     | 1540-1 | 580 (600-1) | 580 (600-1)  | 1540-1½ | 580 (600-1½) | 1540-2  | 580 (600-2)  |  |
| DME MINIMUMS |        |             |              |         |              |         |              |  |
| S-12         | 1440-1 | 480 (500-1) | 480 (500-1¼) | 1440-1¼ | 480 (500-1½) | 1440-1½ | 480 (500-1¾) |  |
| CIRCLING     | 1500-1 | 540 (600-1) | 540 (600-1½) | 1500-1½ | 540 (600-1½) | 1520-2  | 560 (600-2)  |  |

|                   |      |      |      |      |      |
|-------------------|------|------|------|------|------|
| ELEV              | 960  |      |      |      |      |
| REIL Rwy 12       | 0    |      |      |      |      |
| HIRL Rwy 12-30    | 0    |      |      |      |      |
| FAF to MAP 4.7 NM |      |      |      |      |      |
| Knots             | 60   | 90   | 120  | 150  | 180  |
| Min:Sec           | 4:42 | 3:08 | 2:21 | 1:53 | 1:34 |