

ILS or LOC RWY 30

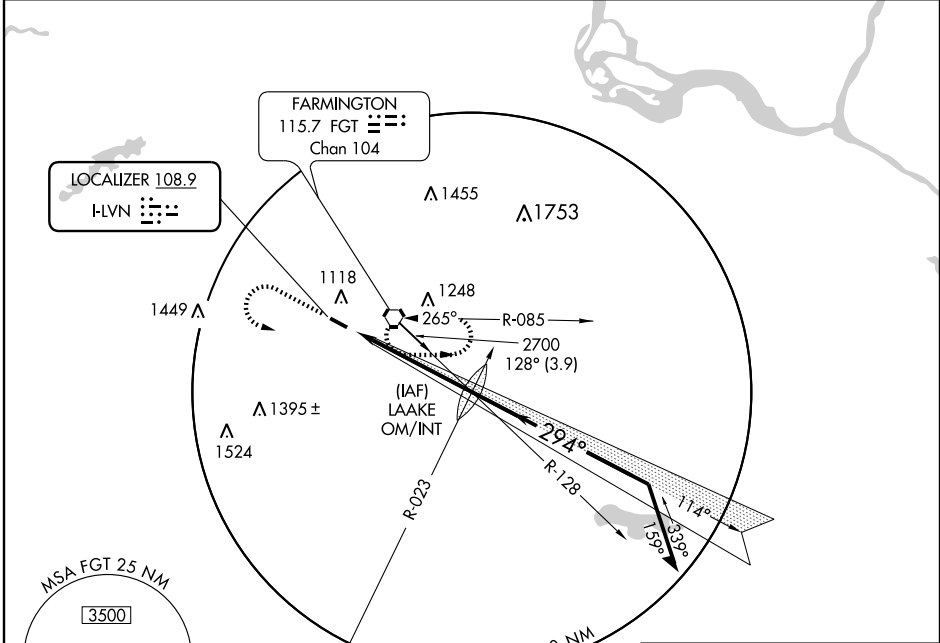
MINNEAPOLIS/AIRLAKE (LVN)

LOC I-LVN 108.9	APP CRS 294°	Rwy Idg 3706
		TDZE 958
		Apt Elev 960

NA Inoperative table does not apply to S-ILS 30 and S-LOC 30 Cats A and B. For inoperative MALS/R, increase S-LOC Cat C visibility to 1½ mile and Cat D visibility to 1½ mile.

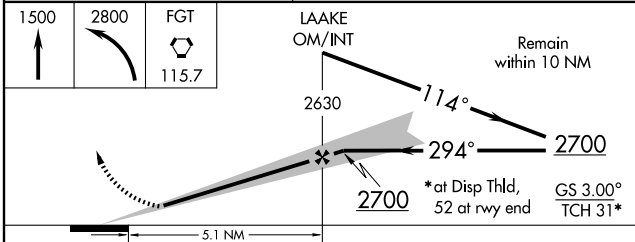
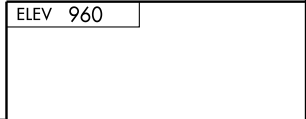
MALS/R
 MISSED APPROACH: Climb to 1500 then climbing left turn to 2800 direct FGT VORTAC and hold.

AWOS-3 118.0	MINNEAPOLIS APP CON 134.7 284.7	CLNC DEL 118.95	UNICOM 123.0 (CTAF)
------------------------	---	---------------------------	-------------------------------



NC-1, 22 OCT 2009 to 19 NOV 2009

NC-1, 22 OCT 2009 to 19 NOV 2009



CATEGORY	A	B	C	D
S-ILS 30		1208-1	250 (300-1)	
S-LOC 30		1400-1	442 (500-1)	
CIRCLING	1500-1	540 (600-1)	1500-1½ 540 (600-1½)	1520-2 560 (600-2)

REIL Rwy 12	
HIRL Rwy 12-30	
FAF to MAP 5.1 NM	
Knots	60 90 120 150 180
Min:Sec	5:06 3:24 2:33 2:02 1:42