

ANTLERS, OKLAHOMA

AL-6650 (FAA)

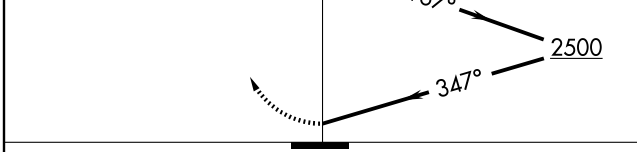
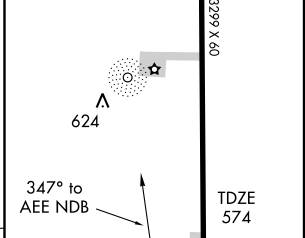
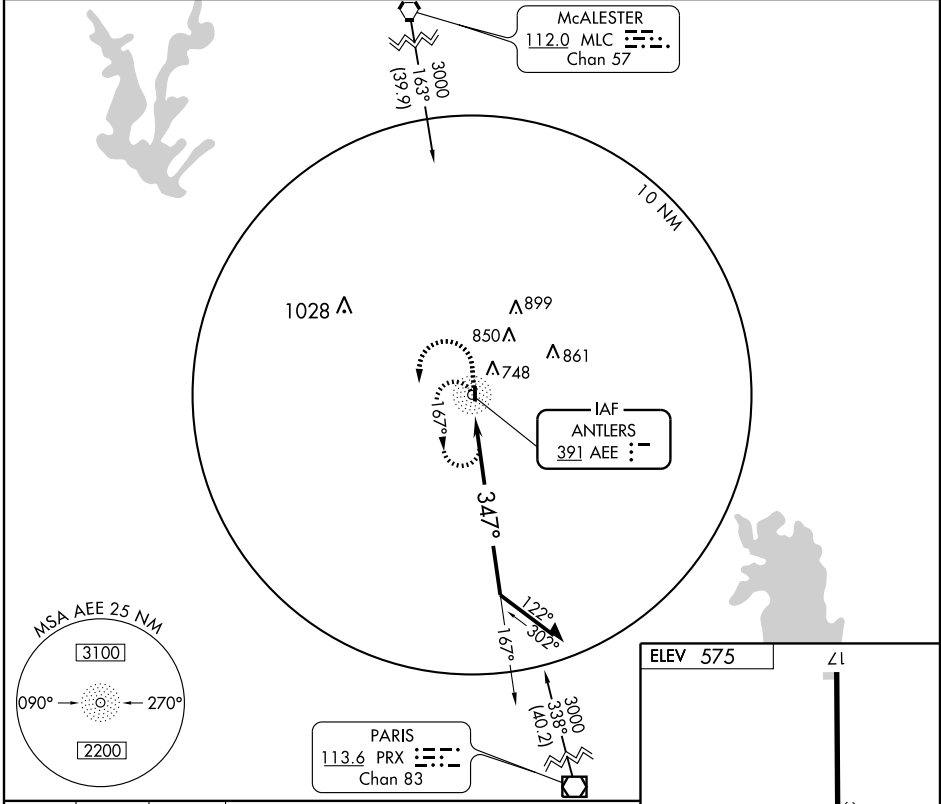
NDB RWY 35

ANTLERS MUNI (80F)

NDB AEE	APP CRS	Rwy Idg	3299
391	347°	TDZE	574
		Apt Elev	575

NA Use Paris/Cox Field altimeter setting. MISSED APPROACH: Climb to 2400 then climbing left turn to 3000 direct AEE NDB and hold.

Paris/Cox Field AWOS-3 119.675	FORT WORTH CENTER 124.875 307.2	CTAF 122.9
--	---	----------------------



CATEGORY	A	B	C	D
S-35	1320-1 746 (800-1)	1320-1¼ 746 (800-1¼)	NA	
CIRCLING	1320-1 745 (800-1)	1320-1¼ 745 (800-1¼)	NA	

MIRL Rwy 17-35

Knots	60	90	120	150	180
Min:Sec					

SC-1, 22 OCT 2009 to 19 NOV 2009

SC-1, 22 OCT 2009 to 19 NOV 2009

ANTLERS, OKLAHOMA
Amdt 3 08185

34°12'N-95°39'W

ANTLERS MUNI (80F)

NDB RWY 35