

RNAV (GPS) RWY 3

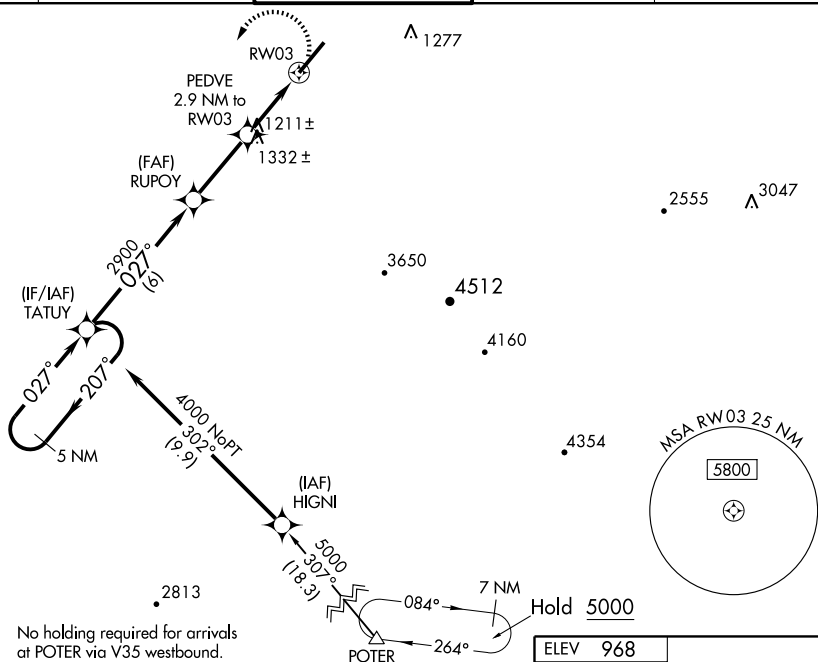
GOODYEAR/PHOENIX GOODYEAR (GYR)

APP CRS	Rwy Idg	8500
027°	TDZE	953
	Apt Elev	968

Procedure NA at night. DME/DME RNP -0.3 NA.
When local altimeter setting not received, use Phoenix Sky Harbor Intl altimeter setting.
VDP NA when using Phoenix Sky Harbor Intl altimeter setting.

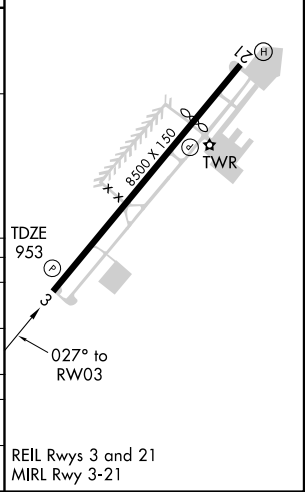
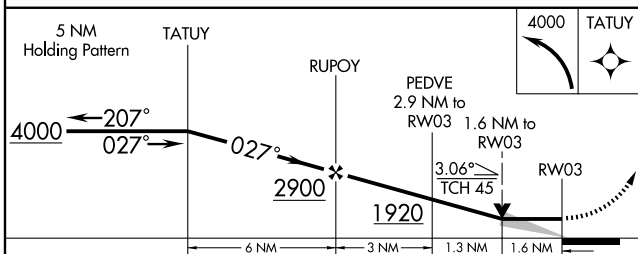
MISSED APPROACH: Climbing left turn to 4000 direct TATUY and hold.

ATIS 118.35	LUKE APP CON * 125.45 263.125	GOODYEAR TOWER * 120.1 (CTAF) 239.3	GND CON 121.7	UNICOM 122.95
-----------------------	---	---	-------------------------	-------------------------



No holding required for arrivals at POTER via V35 westbound.

ELEV 968



CATEGORY	A	B	C	D
LNAV MDA	1480-1 527 (600-1)	1480-1½ 527 (600-1½)	1480-1¾ 527 (600-1¾)	1480-2 527 (600-2)
CIRCLING	1480-1 512 (600-1)	1480-1½ 512 (600-1½)	1480-1¾ 512 (600-1¾)	1620-2 652 (700-2)
PHOENIX SKY HARBOR INTL ALTIMETER SETTING MINIMUMS				
LNAV MDA	1540-1 587 (600-1)	1540-1½ 587 (600-1½)	1540-1¾ 587 (600-1¾)	1540-2 587 (600-2)
CIRCLING	1540-1 572 (600-1)	1540-1½ 572 (600-1½)	1540-1¾ 572 (600-1¾)	1680-2¼ 712 (800-2¼)

REIL Rwy 3 and 21
MIRL Rwy 3-21

SW-4, 22 OCT 2009 to 19 NOV 2009

SW-4, 22 OCT 2009 to 19 NOV 2009