

MESA, ARIZONA

AL-6647 (FAA)

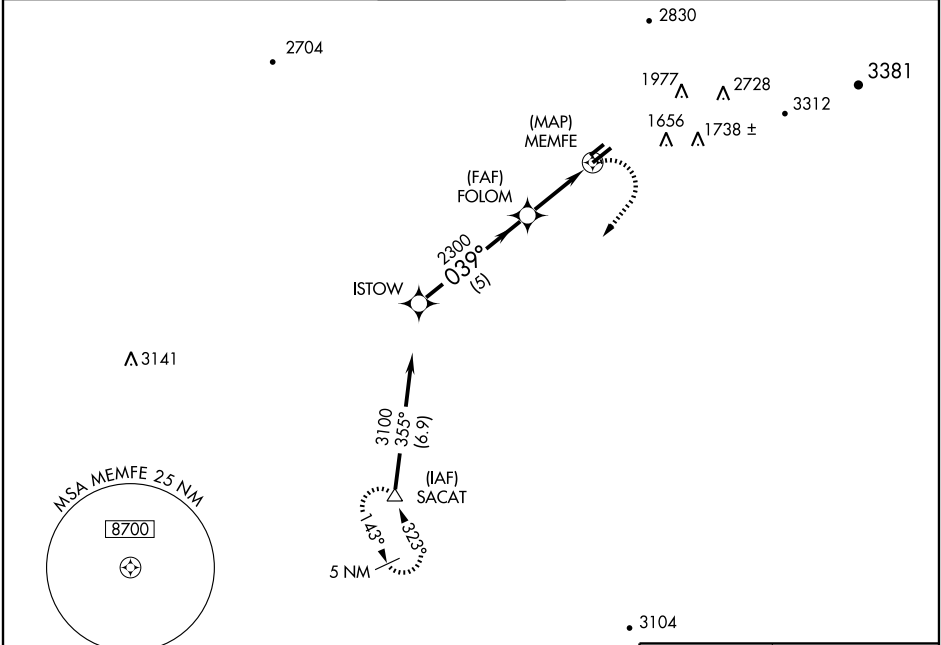
# GPS RWY 4R

MESA/FALCON FIELD (F'F'Z)

APP CRS <b>039°</b>	Rwy Idg <b>5101</b>
	TDZE <b>1381</b>
	Apt Elev <b>1392</b>

**▽** When control tower closed, use Phoenix Sky Harbor  
**▲ NA** altimeter setting. MISSED APPROACH: Climbing right turn to 5000 direct SACAT WP and hold.

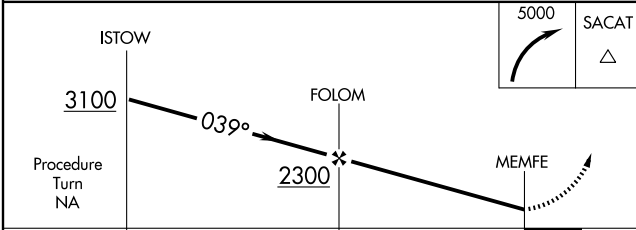
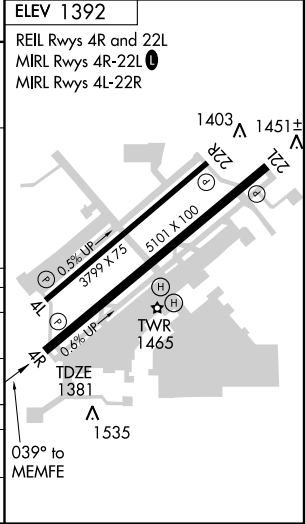
ATIS <b>118.25</b>	PHOENIX APP CON <b>120.7 239.0</b>	FALCON TOWER * <b>124.6</b> (CTAF)	GND CON <b>121.3</b>	UNICOM <b>122.95</b>
-----------------------	---------------------------------------	---------------------------------------	-------------------------	-------------------------



SW-4, 22 OCT 2009 to 19 NOV 2009

SW-4, 22 OCT 2009 to 19 NOV 2009

ELEV 1392



CATEGORY	A	B	C	D
S-4R	1800-1	419 (500-1)	1800-1¼ 419 (500-1¼)	NA
CIRCLING	1860-1	468 (500-1)	1860-1½ 468 (500-1½)	NA
PHOENIX SKY HARBOR ALTIMETER SETTING MINIMUMS				
S-4R	1860-1	479 (500-1)	1860-1¼ 479 (500-1¼)	NA
CIRCLING	1940-1	548 (600-1)	1940-1½ 548 (600-1½)	NA

MESA, ARIZONA  
Orig 09071

33°28'N-111°44'W

# GPS RWY 4R