

# RNAV (GPS)-C

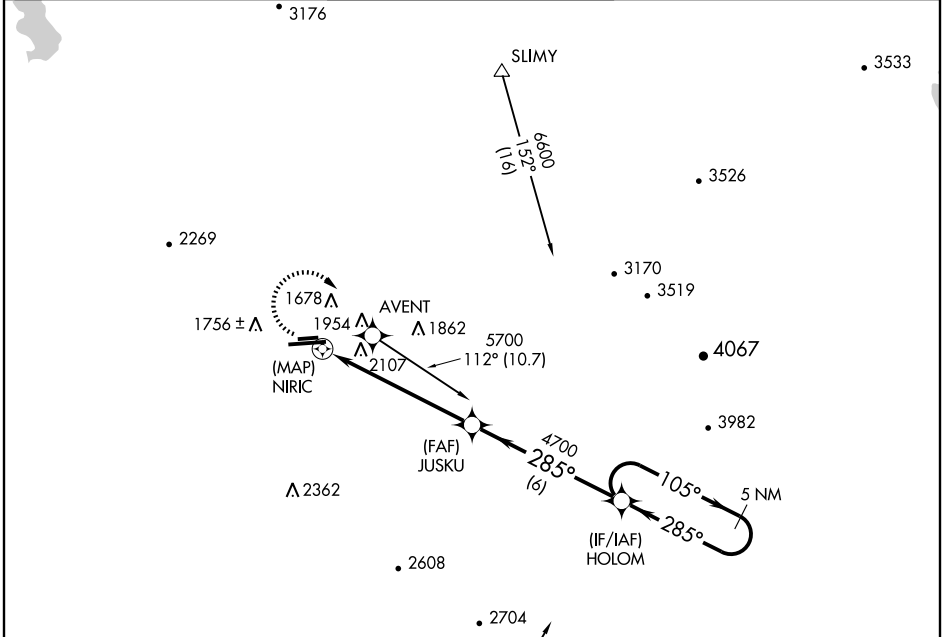
## PHOENIX DEER VALLEY (DVT)

APP CRS <b>285°</b>	Rwy Idg TDZE Apt Elev	<b>N/A</b> <b>N/A</b> <b>1478</b>
------------------------	-----------------------------	---

**▽** DME/DME RNP-0.3 NA.  
**▲** Circling not authorized north of Rwy 7R-25L at night.  
 When VGSI inoperative, circling to Rwy 25R not authorized at night.

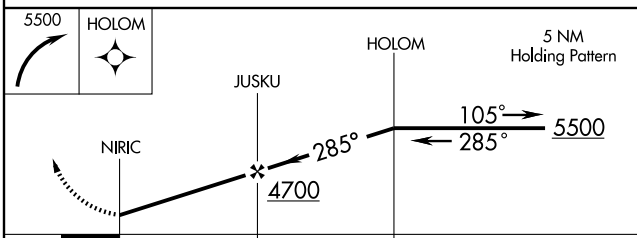
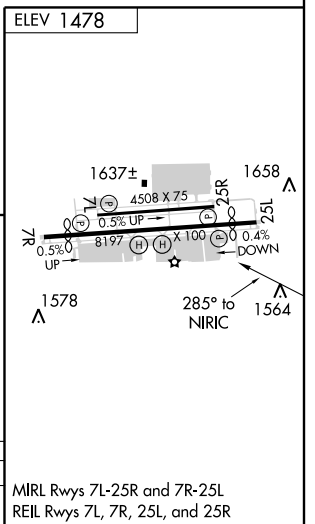
**MISSED APPROACH:** Climbing right turn to 5500 direct HOLOM and hold, continue climb-in-hold to 5500.

ATIS <b>126.5</b>	PHOENIX APP CON <b>120.7 239.0</b>	DEER VALLEY TOWER * <b>118.4 (CTAF) 120.2</b> (Rwy 7R-25L) (Rwy 7L-25R)	GND CON <b>121.8</b>	CLNC DEL <b>123.9</b>
----------------------	---------------------------------------	---	-------------------------	--------------------------



SW-4, 22 OCT 2009 to 19 NOV 2009

SW-4, 22 OCT 2009 to 19 NOV 2009



CATEGORY	A	B	C	D
CIRCLING	2400-1¼ 922 (1000-1¼)	2420-1¼ 942 (1000-1¼)	2420-2¾ 942 (1000-2¾)	2480-3 1002 (1100-3)

MIRL Rwy 7L-25R and 7R-25L  
 REIL Rwy 7L, 7R, 25L, and 25R