

MC KINNEY, TEXAS

AL-6644 (FAA)

WAAS Ch 99599 W17A	APP CRS 176°	Rwy Idg TDZE 575 Apt Elev 585	7001
--	------------------------	---	-------------

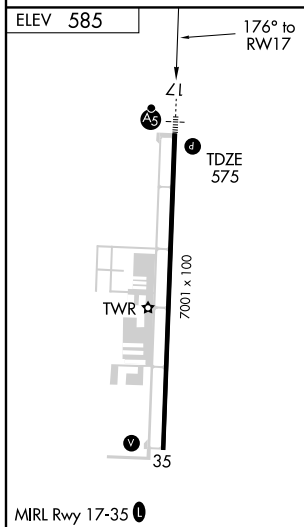
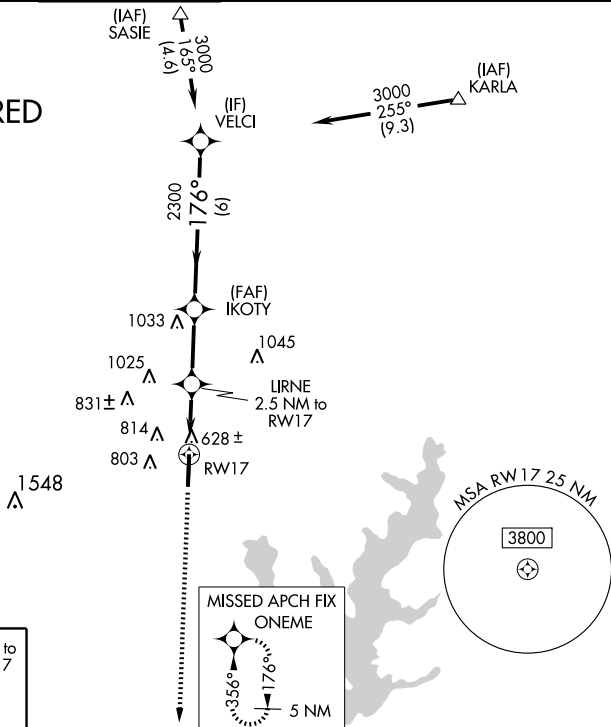
RNAV (GPS) RWY 17

MC KINNEY/ COLLIN COUNTY RGNL AT MC KINNEY (TKI)

<p>▼ DME/DME RNP-0.3 NA. If local altimeter setting not received, use Dallas Love Field altimeter setting and increase all DAs/MDAs 80 feet.</p> <p>▲ VDP NA when using Dallas Love Field altimeter setting. For inoperative MALSR increase LPV visibility to 1 all Cats and LNAV Cat D to 1¼.</p>	<p>MALSR</p>	<p>MISSED APPROACH: Climb to 3000 direct ONEME and hold.</p>
--	--------------	--

ASOS 119.925	REGIONAL APP CON 124.3 282.275	MC KINNEY TOWER ★ 118.825 (CTAF) 0	GND CON 121.875	CLNC DEL ★ 121.35	UNICOM 122.95
------------------------	--	---	---------------------------	-----------------------------	-------------------------

RADAR REQUIRED



3000	ONEME	VGSI and RNAV glidepath not coincident.			VELCI
* LNAV only	LIRNE 2.5 NM to RW17	IKOTY	176°	3000	GS 3.00° TCH 50
	* 1.3 NM to RW17		2300		
	1.3 NM	1.2 NM	2.7 NM	6 NM	
CATEGORY	A	B	C	D	
LPV DA		836-½	261 (300-½)		
LNAV/VNAV DA	NA				
LNAV MDA	1000-½	425 (500-½)	1000-¾ 425 (500-¾)	1000-1 425 (500-1)	
CIRCLING	1120-1	535 (600-1)	1120-1½ 535 (600-1½)	1200-2 615 (700-2)	

MC KINNEY, TEXAS
Orig 09183

MC KINNEY/ COLLIN COUNTY RGNL AT MC KINNEY (TKI)
33°11'N-96°35'W

RNAV (GPS) RWY 17

SC-2, 22 OCT 2009 to 19 NOV 2009

SC-2, 22 OCT 2009 to 19 NOV 2009