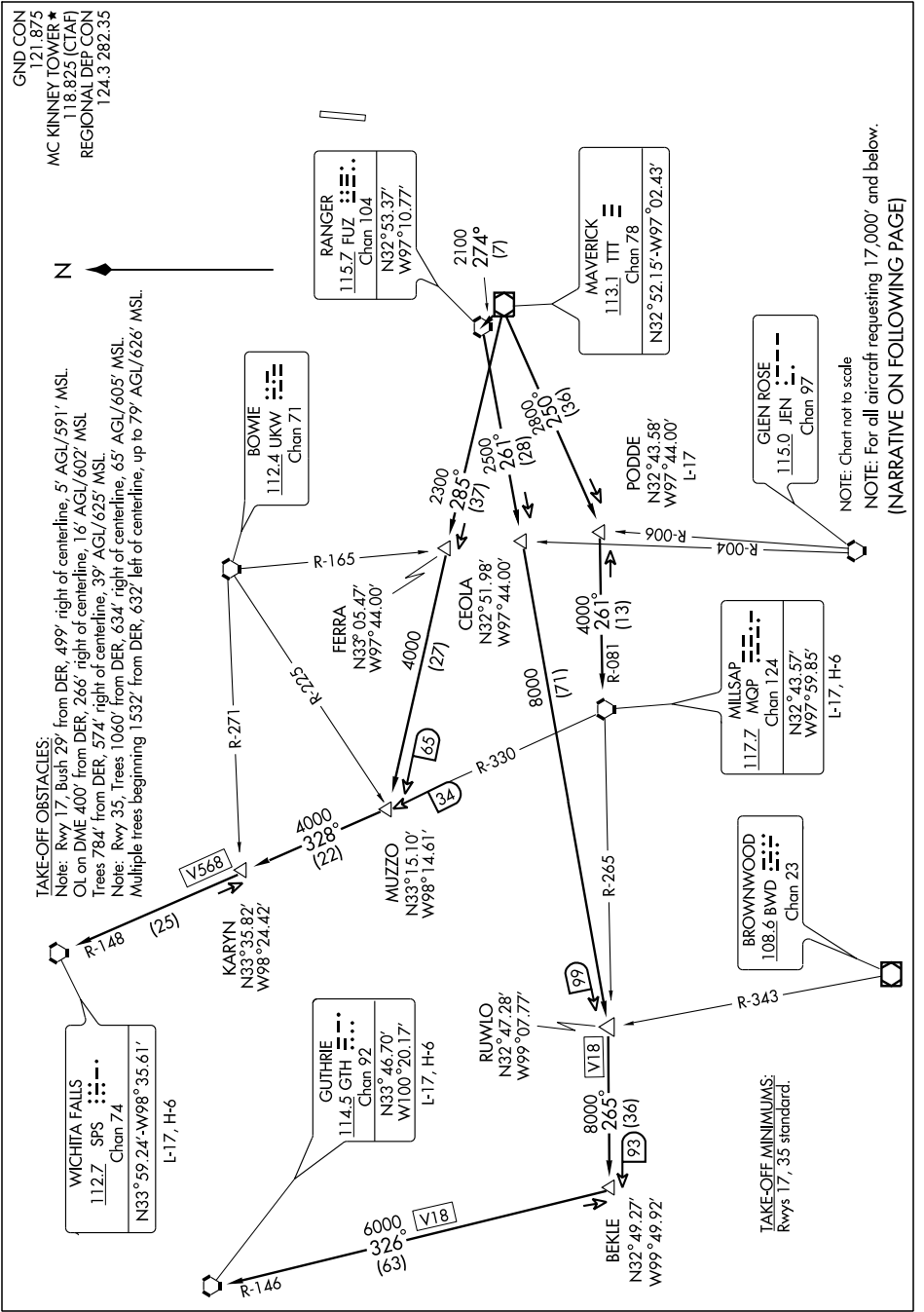


KINGDOM SEVEN DEPARTURE SL-6644 (FAA)

SC-2, 22 OCT 2009 to 19 NOV 2009



NOTE: Chart not to scale
NOTE: For all aircraft requesting 17,000' and below.
(NARRATIVE ON FOLLOWING PAGE)

SC-2, 22 OCT 2009 to 19 NOV 2009