

NORRIDGEWOCK, MAINE

AL-6642 (FAA)

VOR/DME AUG 111.4 Chan 51	APP CRS 010°	Rwy Idg TDZE Apt Elev	3999 268 270
--	------------------------	-----------------------------	---

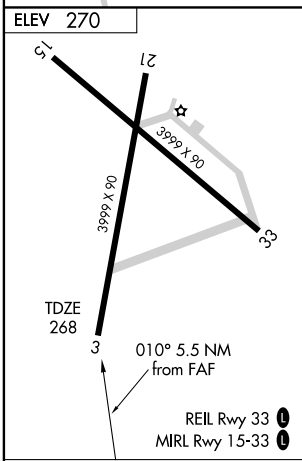
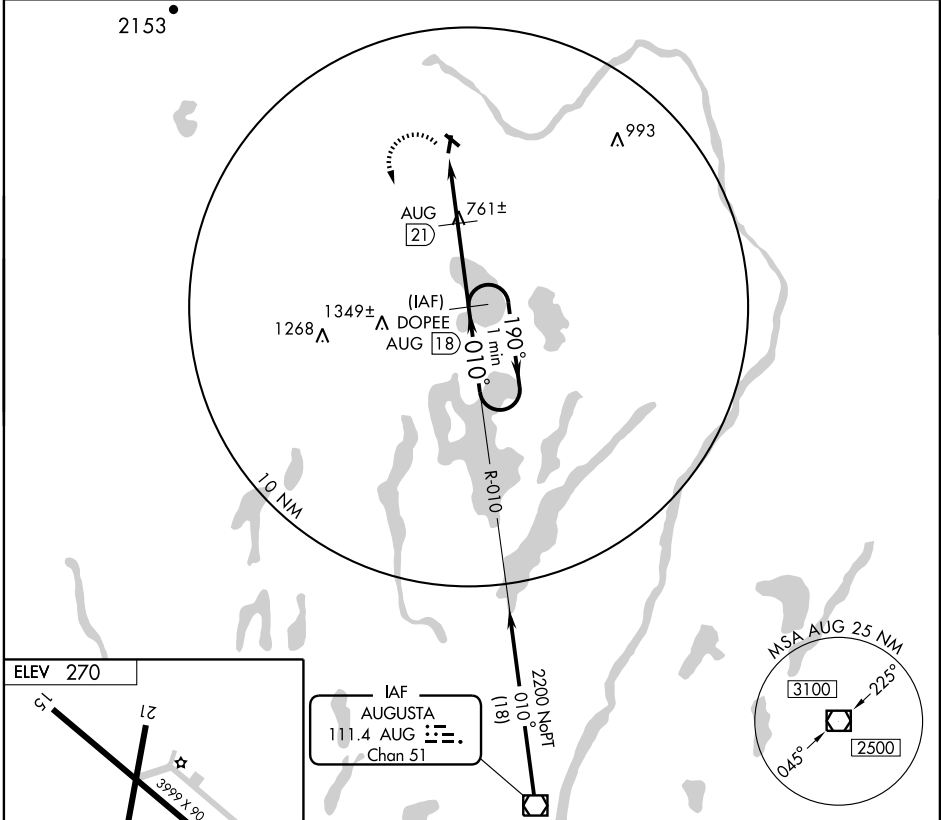
NORRIDGEWOCK /
CENTRAL MAINE AIRPORT OF NORRIDGEWOCK (OWK)

VOR/DME RWY 3

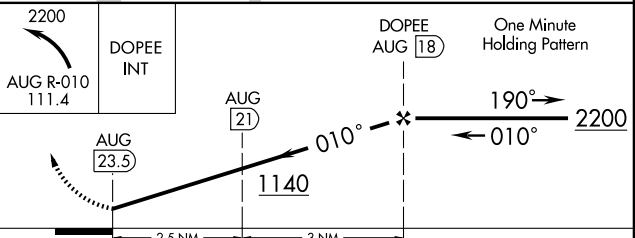
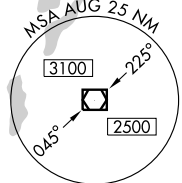
▼ Use Augusta State altimeter setting. ▲ NA Straight-in minimums not authorized at night.	MISSED APPROACH: Climbing left turn to 2200 via AUG R-010 to DOPEE/18 DME and hold.
PORTLAND APP CON* 128.35 299.2	UNICOM 122.8 (CTAF) 0

NE-1, 22 OCT 2009 to 19 NOV 2009

NE-1, 22 OCT 2009 to 19 NOV 2009



IAF
AUGUSTA
111.4 AUG
Chan 51



CATEGORY	A	B	C	D
S-3	1080-1 812 (900-1)	1080-1¼ 812 (900-1¼)	1080-2½ 812 (900-2½)	NA
CIRCLING	1080-1 810 (900-1)	1080-1¼ 810 (900-1¼)	1080-2½ 810 (900-2½)	NA

Knots	60	90	120	150	180
Min:Sec					

NORRIDGEWOCK, MAINE
Amdt 2 06327

NORRIDGEWOCK / CENTRAL MAINE AIRPORT OF NORRIDGEWOCK (OWK)
44°43'N - 69°52'W

VOR/DME RWY 3