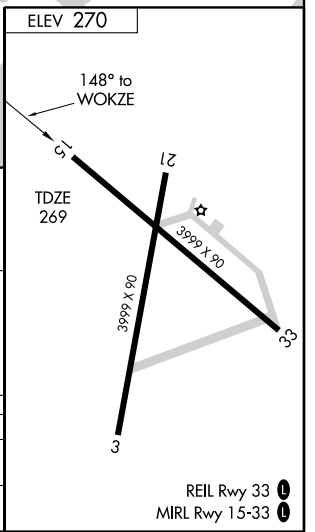
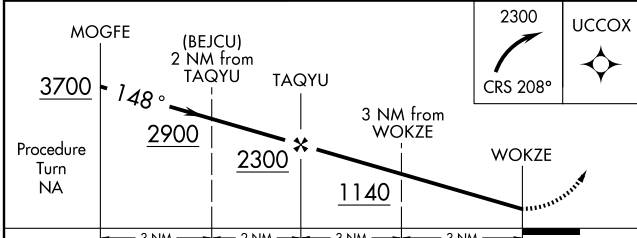
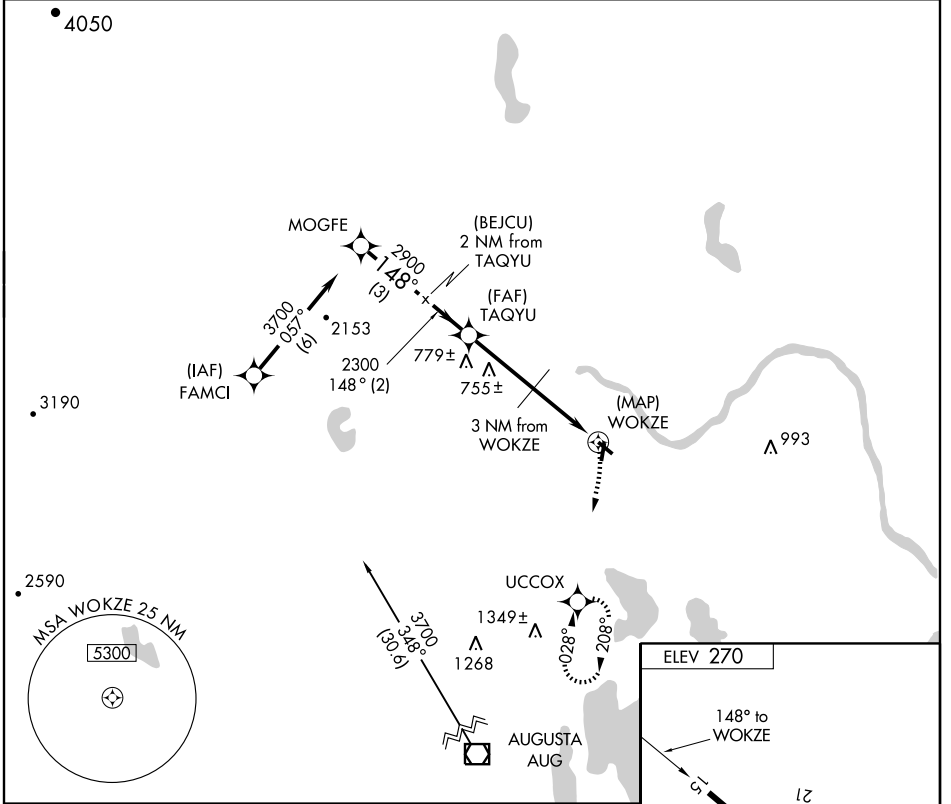


GPS RWY 15

NORRIDGEWOCK / CENTRAL MAINE AIRPORT OF NORRIDGEWOCK (OWK)

APP CRS	Rwy Idg	3999
148°	TDZE	269
	Apt Elev	270

<p>▼ ▲NA</p> <p>Use Augusta State altimeter setting.</p>	<p>MISSED APPROACH: Climbing right turn to 2300 via 208° course to UCCOX WP and hold.</p>
<p>PORTLAND APP CON ★</p> <p>128.35 299.2</p>	<p>UNICOM</p> <p>122.8 (CTAF) 0</p>



CATEGORY	A	B	C	D
S-15	900-1 631 (700-1)	631 (700-1)	900-1¼ 631 (700-1¼)	NA
CIRCLING	900-1 630 (700-1)	920-1 650 (700-1)	1040-2¼ 770 (800-2¼)	NA

GPS RWY 15

NE-1, 22 OCT 2009 to 19 NOV 2009

NE-1, 22 OCT 2009 to 19 NOV 2009

REIL Rwy 33 0
MIRL Rwy 15-33 0