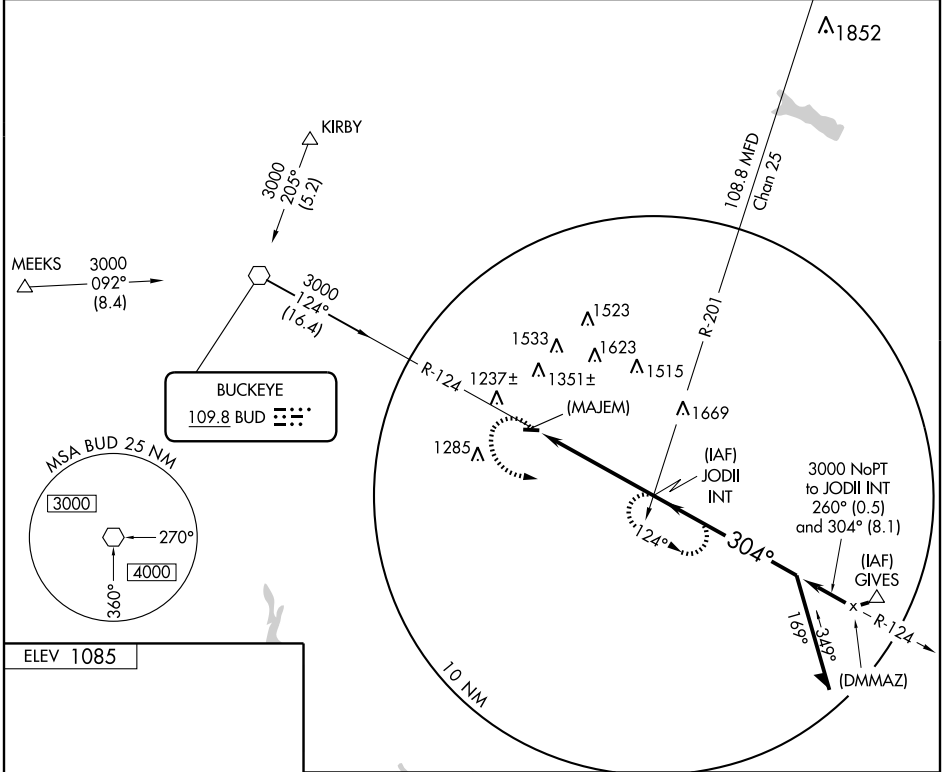


VOR or GPS-A
MOUNT GILEAD/MORROW COUNTY (4I9)

VOR BUD 109.8	APP CRS 304°	Rwy Idg TDZE Apt Elev	N/A N/A 1085
-------------------------	------------------------	-----------------------------	---

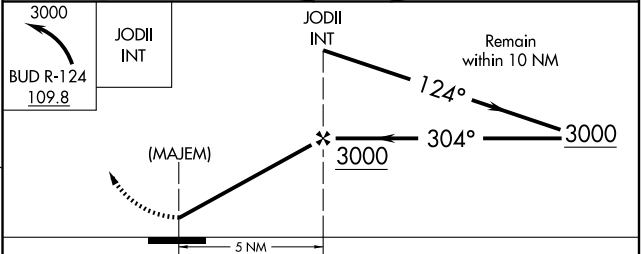
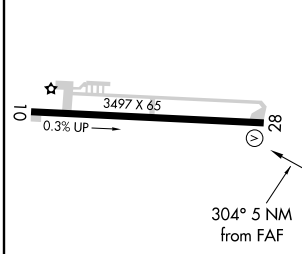
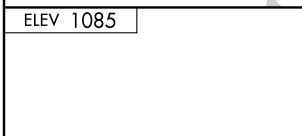
▼ Use Mansfield altimeter setting; when not available, use Columbus altimeter setting.
 ▲ NA MISSED APPROACH: Climbing left turn to 3000 via BUD R-124 to JODII Int and hold.

MANSFIELD APP CON* **124.2 390.8** UNICOM **122.8 (CTAF)**



EC-2, 22 OCT 2009 to 19 NOV 2009

EC-2, 22 OCT 2009 to 19 NOV 2009



CATEGORY	A	B	C	D
CIRCLING	1700-1 615 (700-1)	1720-1 635 (700-1)	1720-1¾ 635 (700-1¾)	NA
COLUMBUS ALTIMETER SETTING MINIMUMS				
CIRCLING	1740-1 655 (700-1)	1760-1 675 (700-1)	1760-2 675 (700-2)	NA