

NORWALK, OHIO

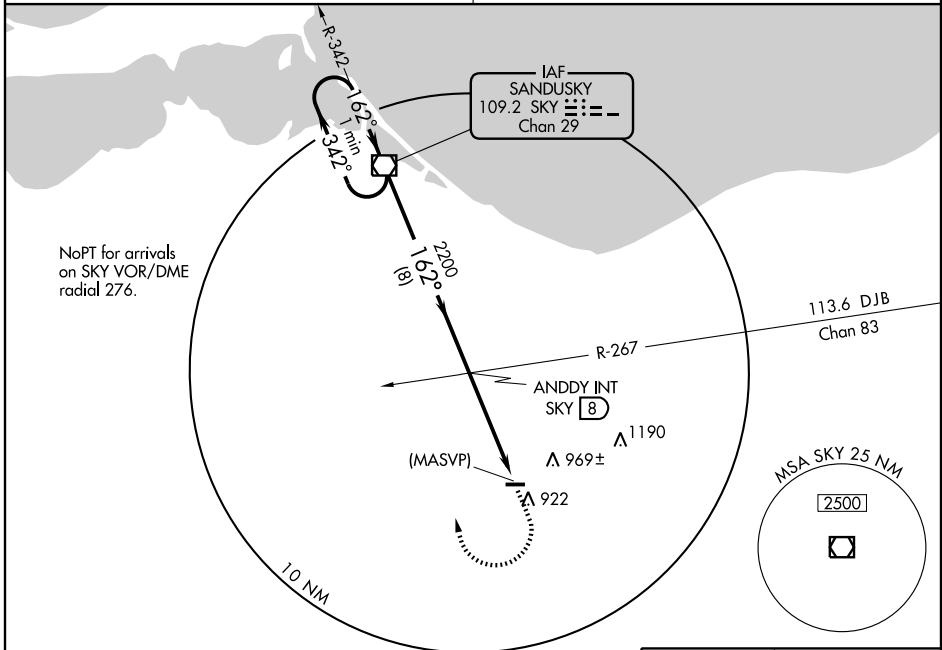
AL-6640 (FAA)

VOR or GPS-A

NORWALK-HURON COUNTY (5A.1)

VOR/DME SKY 109.2 Chan 29	APP CRS 162°	Rwy Idg TDZE Apt Elev	N/A N/A 852
---	------------------------	-----------------------------	--

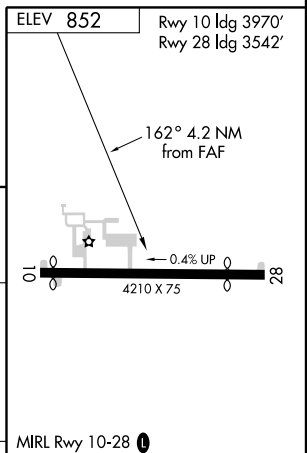
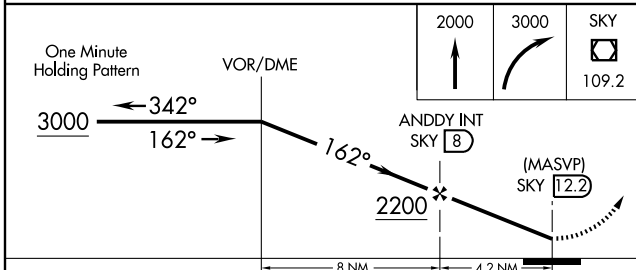
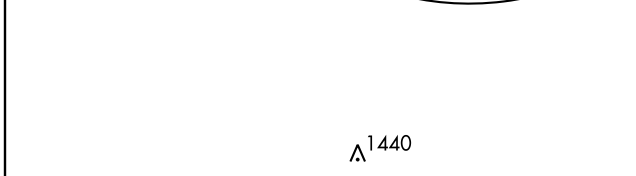
<p>▼ Use Cleveland-Hopkins altimeter setting.</p> <p>▲ NA</p>	<p>MISSED APPROACH: Climb to 2000, then climbing right turn to 3000 direct SKY VOR/DME and hold.</p>
<p>MANSFIELD APP CON ★</p> <p>124.2 390.8</p>	<p>UNICOM</p> <p>122.8 (CTAF) 0</p>



NoPT for arrivals on SKY VOR/DME radial 276.

EC-2, 22 OCT 2009 to 19 NOV 2009

EC-2, 22 OCT 2009 to 19 NOV 2009



CATEGORY	A	B	C	D	FAF to MAP 4.2 NM					
CIRCLING	1400-1 548 (600-1)		1420-1½ 568 (600-1½)	1520-2 668 (700-2)	Knots	60	90	120	150	180
					Min:Sec	4:12	2:48	2:06	1:41	1:24

NORWALK, OHIO
Amdt 5A 04274

41°15'N - 82°33'W

NORWALK-HURON COUNTY (5A.1)

VOR or GPS-A