

NORWALK, OHIO

AL-6640 (FAA)

GPS RWY 28

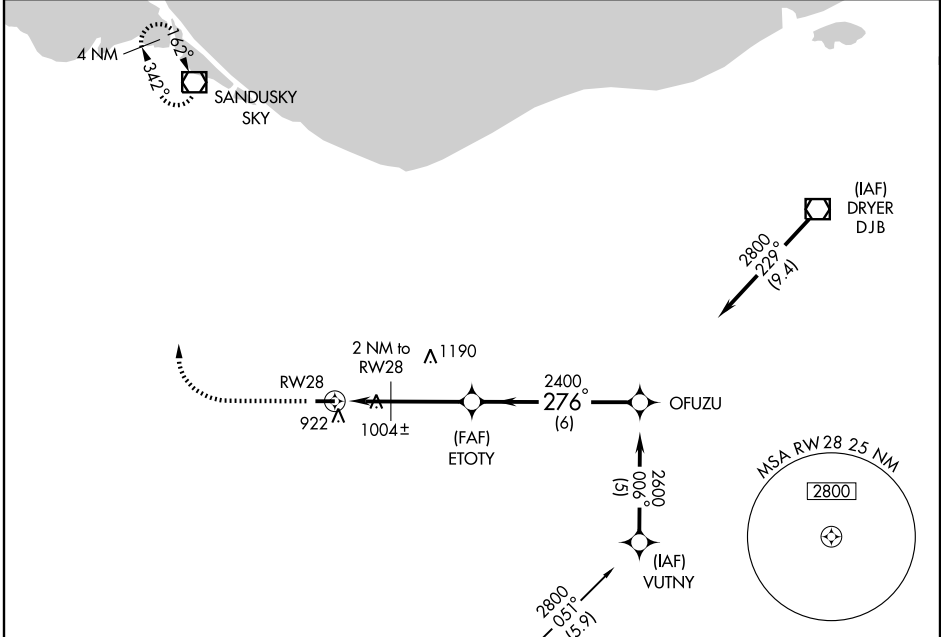
NORWALK-HURON COUNTY (5A1)

APP CRS	Rwy ldg	3542
276°	TDZE	851
	Apt Elev	852

▼ Use Cleveland-Hopkins altimeter setting.
▲ NA MISSED APPROACH: Climb to 2000, then climbing right turn to 3000 direct SKY VOR/DME and hold.

MANSFIELD APP CON ★
124.2 390.8

UNICOM
122.8 (CTAF) ①

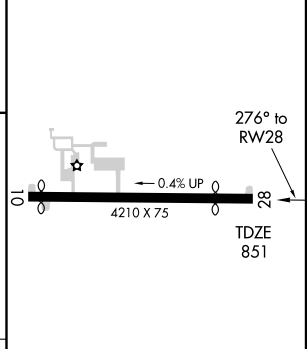
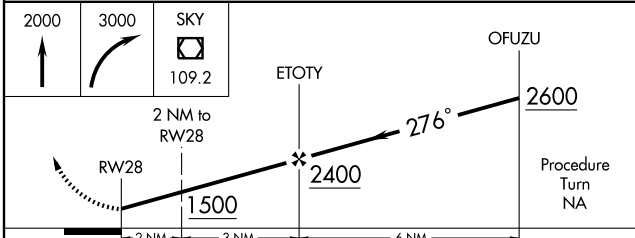


EC-2, 22 OCT 2009 to 19 NOV 2009

EC-2, 22 OCT 2009 to 19 NOV 2009



ELEV 852	Rwy 10 ldg 3970'
	Rwy 28 ldg 3542'



CATEGORY	A	B	C	D
S-28	1340-1	489 (500-1)	1340-1½ 489 (500-1½)	1340-1½ 489 (500-1½)
CIRCLING	1360-1 508 (600-1)	1400-1 548 (600-1)	1400-1½ 548 (600-1½)	1420-2 568 (600-2)

MIRL Rwy 10-28 ①

NORWALK, OHIO
 Orig 08325

41°15'N - 82°33'W

NORWALK-HURON COUNTY (5A1)

GPS RWY 28