

LINCOLN PARK, NEW JERSEY

AL-6637 (FAA)

RNAV (GPS) RWY 1

LINCOLN PARK (NØ7)

APP CRS	Rwy ldg	2103
008°	TDZE	182
	Apt Elev	182

▼ Use Teterboro altimeter setting. DME/DME RNP-0.3 NA.
 ▲ NA Visibility reduction by helicopters NA.

MISSED APPROACH: Climb to 3000 direct HALUP and via 292° track to SAX VORTAC and hold.

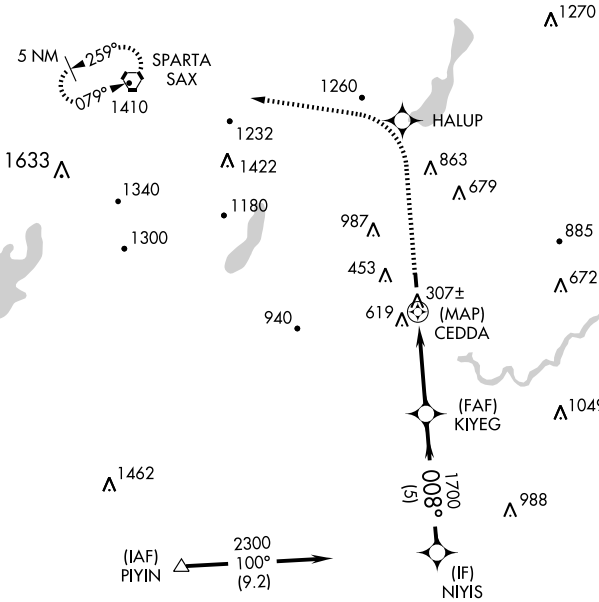
NEW YORK APP CON
127.6 379.9

GCO
121.725

UNICOM
122.8 (CTAF) Ø

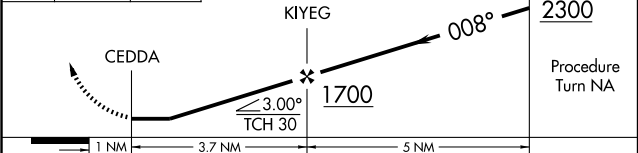
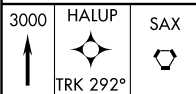
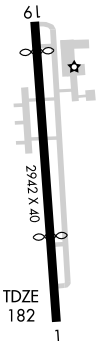
NE-2, 22 OCT 2009 to 19 NOV 2009

NE-2, 22 OCT 2009 to 19 NOV 2009



ELEV 182 Rwy 1 ldg 2103'
Rwy 19 ldg 2683'

Procedure NA for arrivals at PIYIN via V3-405-419 southwestbound.



CATEGORY	A	B	C	D
LNAV MDA	1240-1¼ 1058 (1100-1¼)		NA	
CIRCLING	1460-1¼ 1278 (1300-1¼)		NA	

MIRL Rwy 1-19 Ø

LINCOLN PARK, NEW JERSEY
Orig 08269

40°57'N - 74°19'W

RNAV (GPS) RWY 1