

# RNAV (GPS) RWY 32

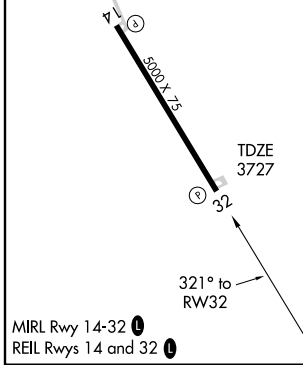
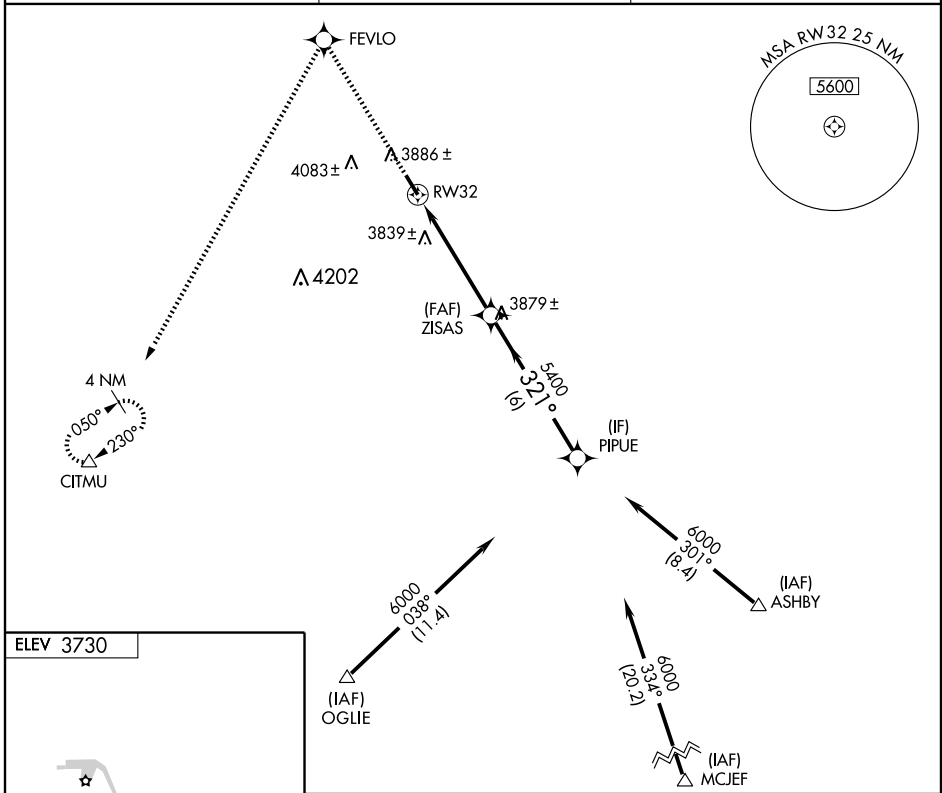
HOLYOKE (HE/Q)

APP CRS <b>321°</b>	Rwy Idg <b>5000</b>
	TDZE <b>3727</b>
	Apt Elev <b>3730</b>

**NA** DME/DME RNP-0.3 NA. When local altimeter setting not received, use Sidney Muni / Lloyd W. Carr Field altimeter setting and increase all MDAs 200 feet and increase LNAV Cat. C/D visibility ½ mile, Circling Cat. B/C visibility ¼ mile and Circling Cat. D visibility ¾ mile. VDP NA when using Sidney Muni / Lloyd W. Carr Field altimeter setting.

**MISSED APPROACH:**  
Climb to 6500 direct FEVLO and left turn via 201° track to CITMU and hold.

AWOS-3 <b>119.275</b>	DENVER CENTER <b>118.475 225.4</b>	UNICOM <b>122.7 (CTAF) 0</b>
--------------------------	---------------------------------------	---------------------------------



6500	FEVLO	201° track	CITMU	PIPUÉ
				6000
		1.1 NM to RWY 32	ZISAS	
				Procedure Turn NA
		1.1	4 NM	6 NM
CATEGORY	A	B	C	D
LNAV MDA	4100-1 373 (400-1)			4100-1¼ 373 (400-1¼)
CIRCLING	4200-1 470 (500-1)	4240-1 510 (600-1)	4240-1½ 510 (600-1½)	4400-2 670 (700-2)

SW-1, 22 OCT 2009 to 19 NOV 2009

SW-1, 22 OCT 2009 to 19 NOV 2009