

SPRINGVILLE, ARIZONA

AL-6631 (FAA)

# GPS RWY 21

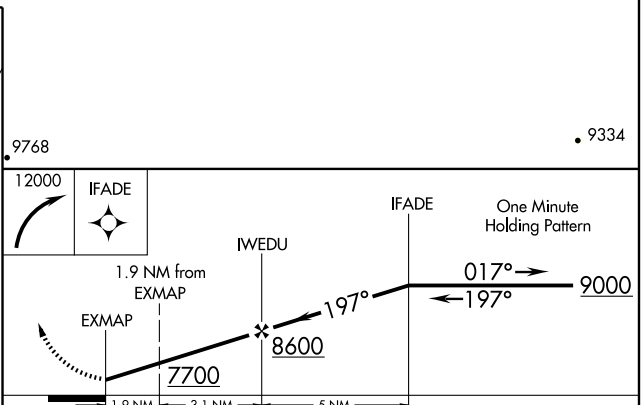
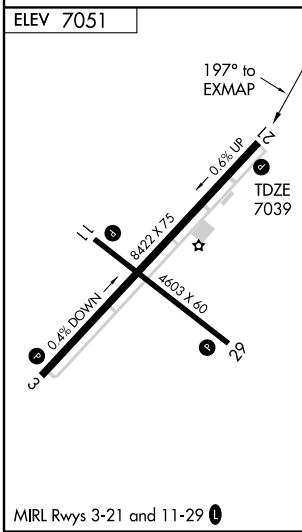
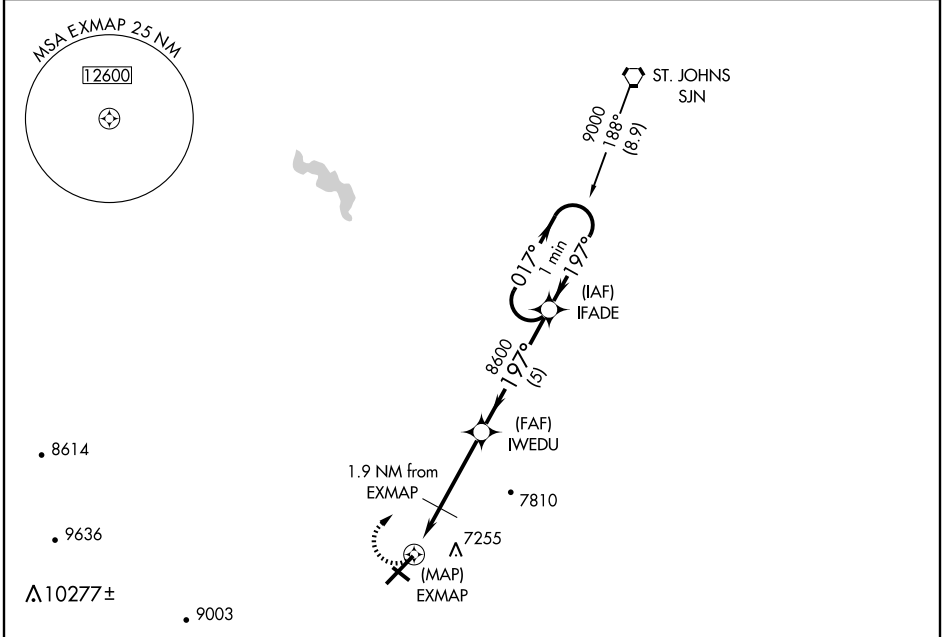
SPRINGVILLE MUNI (D68)

APP CRS	Rwy Idg	<b>8422</b>
<b>197°</b>	TDZE	<b>7039</b>
	Apt Elev	<b>7051</b>

**⚠** Procedure not authorized at night.  
**⚠ NA** Obtain local altimeter setting on CTAF; when not received, procedure not authorized.

MISSED APPROACH: Climbing right turn to 12000 direct IFADE WP and hold.

AWOS-3 <b>119.65</b>	ALBUQUERQUE CENTER <b>132.9 239.05</b>	UNICOM <b>122.8 (CTAF) 0</b>
-------------------------	---	---------------------------------



CATEGORY	A	B	C	D
S-21	7360-1	321 (400-1)	NA	
CIRCLING	7560-1 509 (600-1)	7660-1 609 (700-1)	NA	

SPRINGVILLE, ARIZONA  
 Orig 09071

34°08'N-109°19'W

# GPS RWY 21

SW-4, 22 OCT 2009 to 19 NOV 2009

SW-4, 22 OCT 2009 to 19 NOV 2009