

GPS RWY 3

MONTICELLO/ WAYNE COUNTY (EKQ)

APP CRS 039°	Rwy Idg 4000
	TDZE 962
	Apt Elev 963

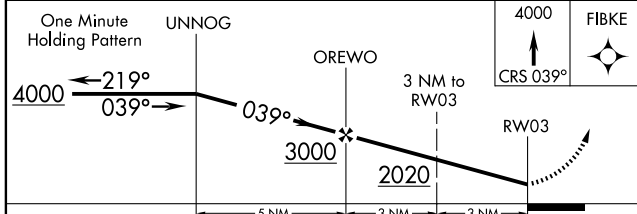
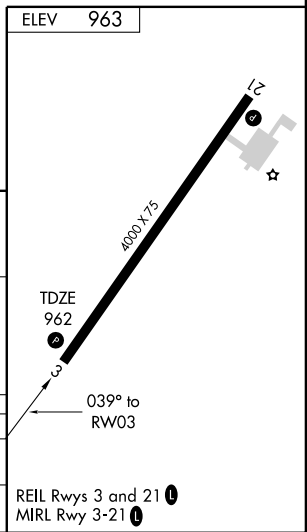
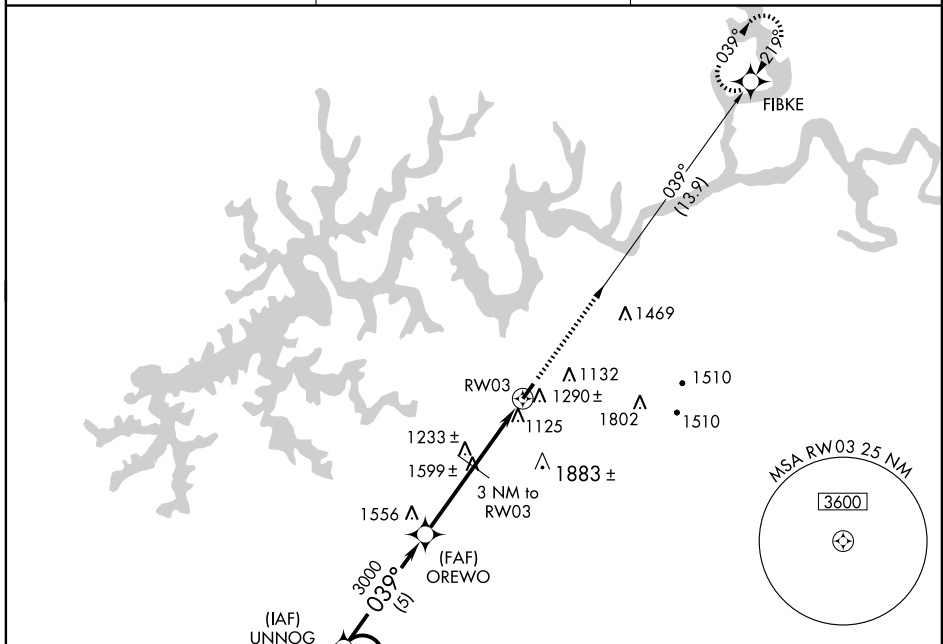
⚠ Use Somerset altimeter setting; when not received, procedure not authorized.

MISSED APPROACH: Climb to 4000 via 039° course to FIBKE WP and hold.

ASOS
118.825

INDIANAPOLIS CENTER
124.625 371.925

UNICOM
122.8 (CTAF) 0



CATEGORY	A	B	C	D
S-3	1580-1	618 (700-1)	1580-1½ 618 (700-1¾)	1580-2 618 (700-2)
CIRCLING	1820-1 857 (900-1)	1820-1¼ 857 (900-1¼)	1820-2½ 857 (900-2½)	2060-3 1097 (1100-3)

REIL Rwy 3 and 21 0
MIRL Rwy 3-21 0

SE-1, 22 OCT 2009 to 19 NOV 2009

SE-1, 22 OCT 2009 to 19 NOV 2009