

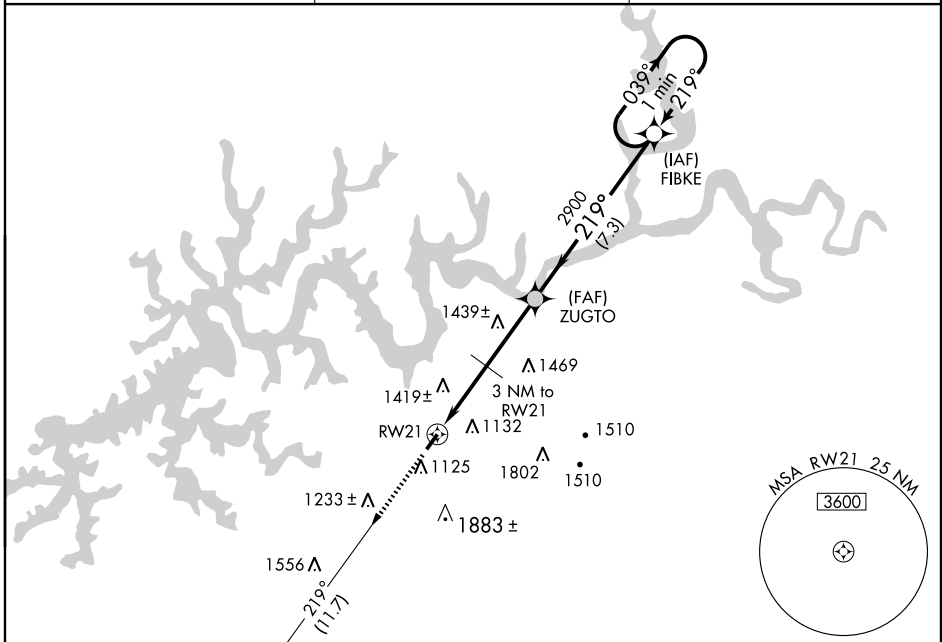
# GPS RWY 21

MONTICELLO/ WAYNE COUNTY (EKQ)

APP CRS <b>219°</b>	Rwy Idg <b>4000</b>
	TDZE <b>963</b>
	Apt Elev <b>963</b>

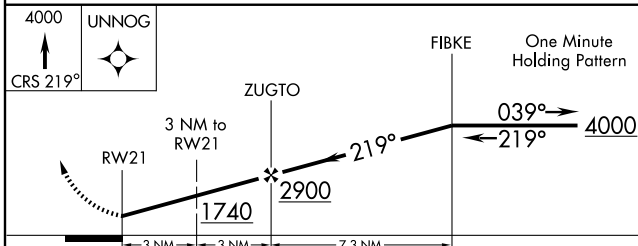
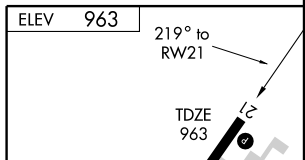
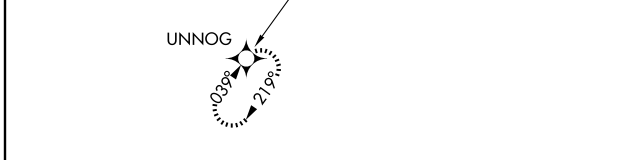
<p>Use Somerset altimeter setting; when not received, procedure not authorized.</p>	<p>MISSED APPROACH: Climb to 4000 via 219° course to UNNOG WP and hold.</p>
---	---

ASOS <b>118.825</b>	INDIANAPOLIS CENTER <b>124.625 371.925</b>	UNICOM <b>122.8 (CTAF) 0</b>
------------------------	---	---------------------------------

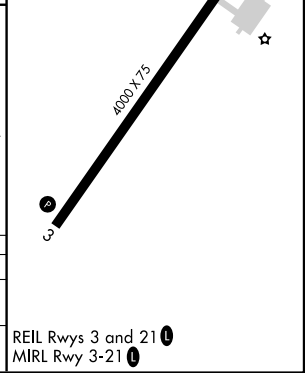


SE-1, 22 OCT 2009 to 19 NOV 2009

SE-1, 22 OCT 2009 to 19 NOV 2009



CATEGORY	A	B	C	D
S-21	1680-1	717 (800-1)	1680-2	1680-2¼
			717 (800-2)	717 (800-2¼)
CIRCLING	1820-1	1820-1¼	1820-2½	2060-3
	857 (900-1)	857 (900-1¼)	857 (900-2½)	1097 (1100-3)



# GPS RWY 21