

# RNAV (GPS) RWY 35

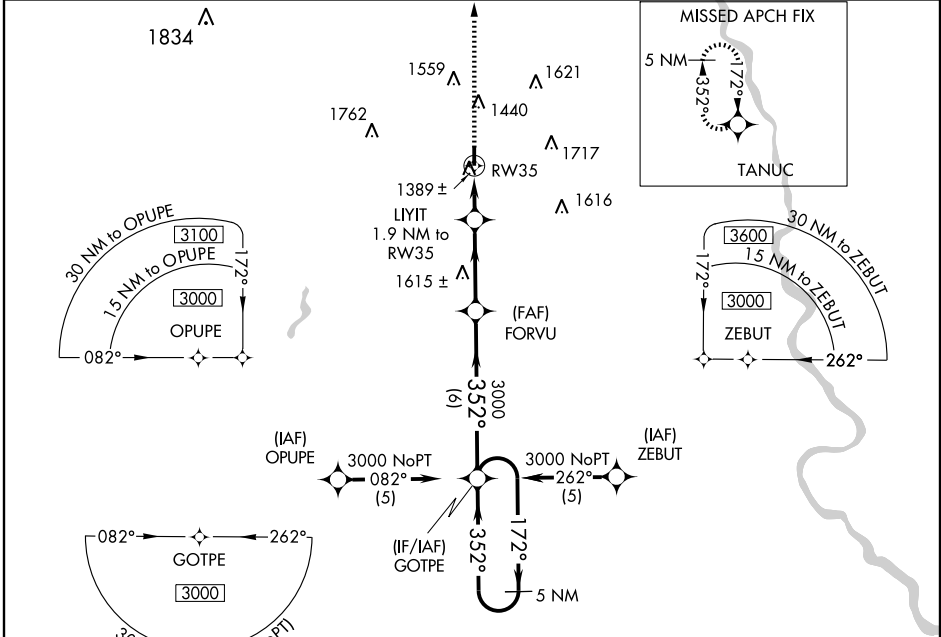
WELLINGTON MUNI (E/GT)

WAAS CH <b>70504</b> <b>W35A</b>	APP CRS <b>352°</b>	Rwy Idg TDZE Apt Elev	<b>4201</b> <b>1277</b> <b>1277</b>
--	------------------------	-----------------------------	---

**BARO-VNAV NA** when using Wichita Mid-Continent altimeter setting. For uncompensated BARO -VNAV systems, LNAV/VNAV NA below -17°C (2°F) or above 46°C (114°F). When local altimeter setting not received, use Wichita Mid-Continent altimeter setting and increase all DAs 54 feet and all MDAs 60 feet. DME/DME RNP-0.3 NA. Visibility reduction by helicopters NA.

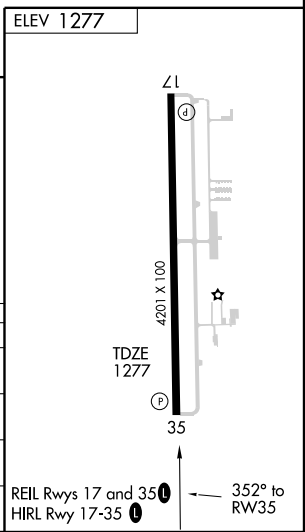
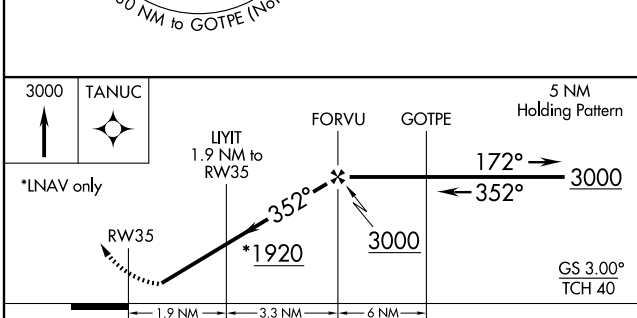
**MISSED APPROACH:** Climb to 3000 direct TANUC and hold.

AWOS-3 <b>118.875</b>	WICHITA APP CON <b>134.85 385.55</b>	UNICOM <b>122.8</b> (CTAF) <b>0</b>
--------------------------	---	--



NC-2, 22 OCT 2009 to 19 NOV 2009

NC-2, 22 OCT 2009 to 19 NOV 2009



CATEGORY	A	B	C	D
LPV DA	1527-1 250 (300-1)			
LNAV/VNAV DA	1659-1½ 382 (400-1½)			
LNAV MDA	1640-1 363 (400-1)			1640-1¼ 363 (400-1¼)
CIRCLING	1760-1 483 (500-1)		1760-1½ 483 (500-1½)	1840-2 563 (600-2)