

RNAV (GPS) RWY 17

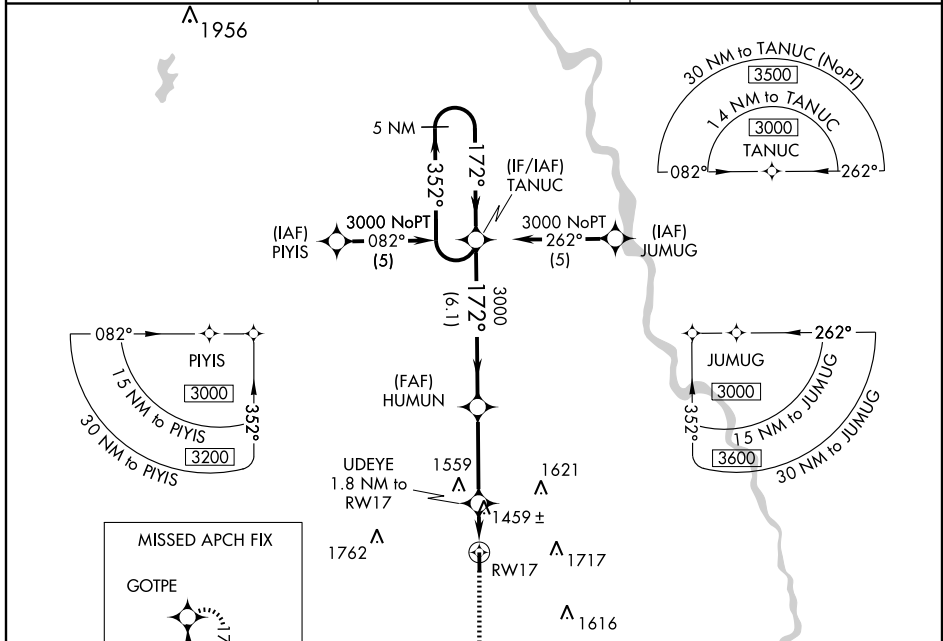
WELLINGTON MUNI (EGT)

WAAS CH 93804 W17A	APP CRS 172°	Rwy Idg TDZE Apt Elev 4201 1277 1277
--	------------------------	--

▽ BARO-VNAV NA when using Wichita Mid-Continent altimeter setting. For uncompensated BARO-VNAV systems, LNAV/VNAV NA below -17°C (2°F) or above 46°C (114°F). If local altimeter setting not received, use Wichita Mid-Continent altimeter setting and increase all DAs 54 feet and all MDAs 60 feet. VDP NA when using Wichita Mid-Continent altimeter setting.

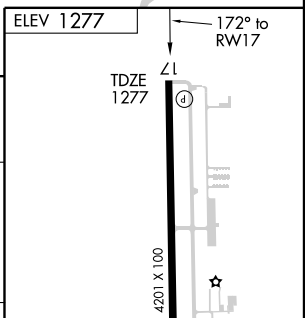
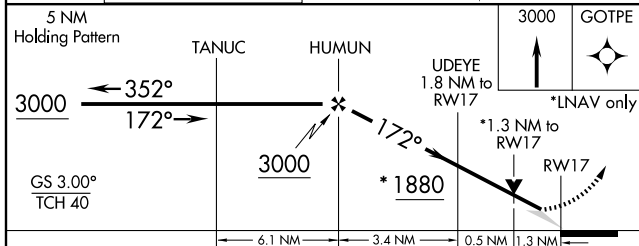
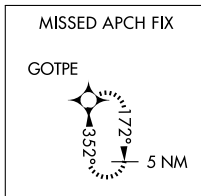
▲ NA MISSED APPROACH: Climb to 3000 direct GOTPE and hold.

AWOS-3 118.875	WICHITA APP CON 134.85 385.55	UNICOM 122.8 (CTAF) 0
--------------------------	---	--



NC-2, 22 OCT 2009 to 19 NOV 2009

NC-2, 22 OCT 2009 to 19 NOV 2009



CATEGORY	A	B	C	D
LPV DA	1527-1 250 (300-1)			
LNAV/VNAV DA	1763-1 3/4 486 (500-1 3/4)			
LNAV MDA	1720-1 443 (500-1)	1720-1 1/4 443 (500-1 1/4)	1720-1 1/2 443 (500-1 1/2)	1720-1 1/2 443 (500-1 1/2)
CIRCLING	1760-1 483 (500-1)	1760-1 1/2 483 (500-1 1/2)	1840-2 563 (600-2)	

