

HERLONG, CALIFORNIA

RNAV (GPS) RWY 26

APCH CRS	Rwy ldg	10,000
262°	TDZE	4012
	Arpt Elev	4012

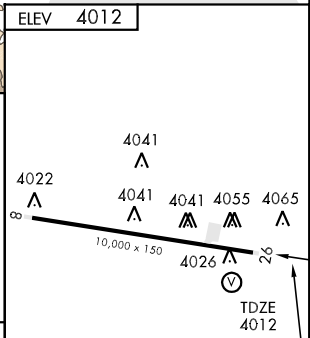
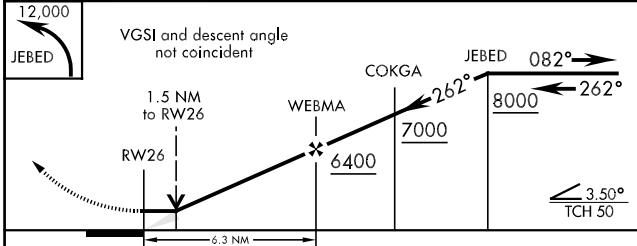
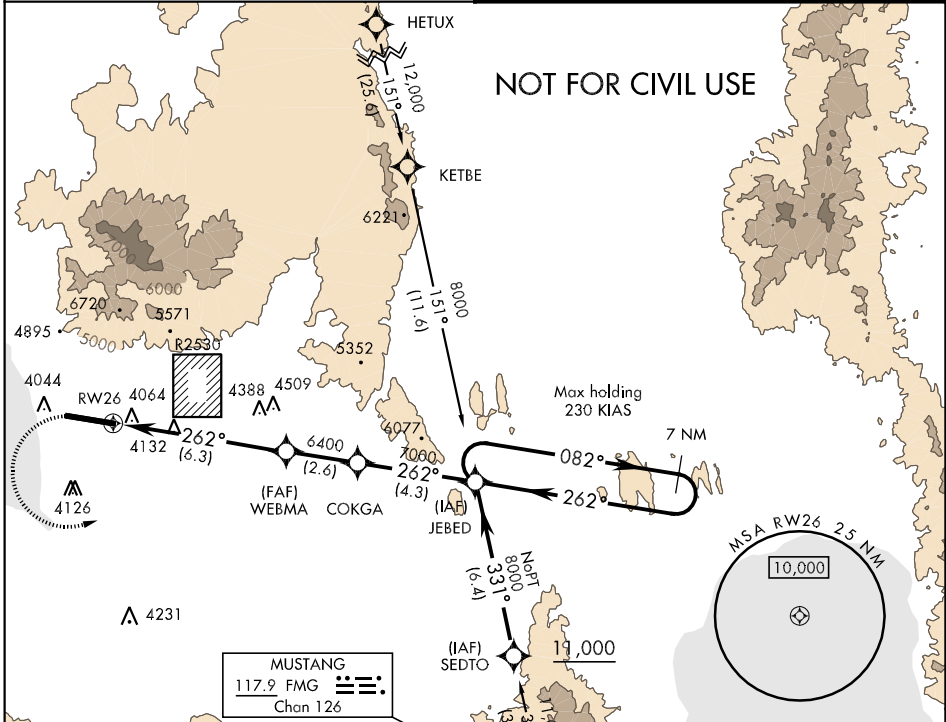
AL-6624 [USA]

AMEDEE AAF (KAHC)

▼ DME/DME RNP-0.3 NA.
 Procedure not authorized at night.
 ** Circling NA for CATS DE north of Rwy 8-26.

MISSED APPROACH: Climbing left turn to 12,000 direct JEBED and hold, continue climb-in-hold to 12,000. When authorized by ATC, climb in hold to 14,000.

OAKLAND CENTER	CTAF
128.8 285.5	126.1 241.9 0*



CATEGORY	A	B	C	D	E
RNAV MDA	4600-1 588 (600-1)		4600-1½ 588 (600-1½)	4600-1¾ 588 (600-1¾)	4600-2 588 (600-2)
CIRCLING **	4600-1 588 (600-1)		4600-1½ 588 (600-1½)	4600-2 588 (600-2)	

LIRL Rwy 26 0*

HERLONG, CALIFORNIA
 Amdt 1 09239

40°16'N-120°09'W

AMEDEE AAF (KAHC)

RNAV (GPS) RWY 26

SW-2, 22 OCT 2009 to 19 NOV 2009

SW-2, 22 OCT 2009 to 19 NOV 2009