

WAAS CH 53409 W09A	APP CRS 093°	Rwy Idg TDZE Apt Elev	4001 1082 1082
--	------------------------	-----------------------------	---

RNAV (GPS) RWY 9

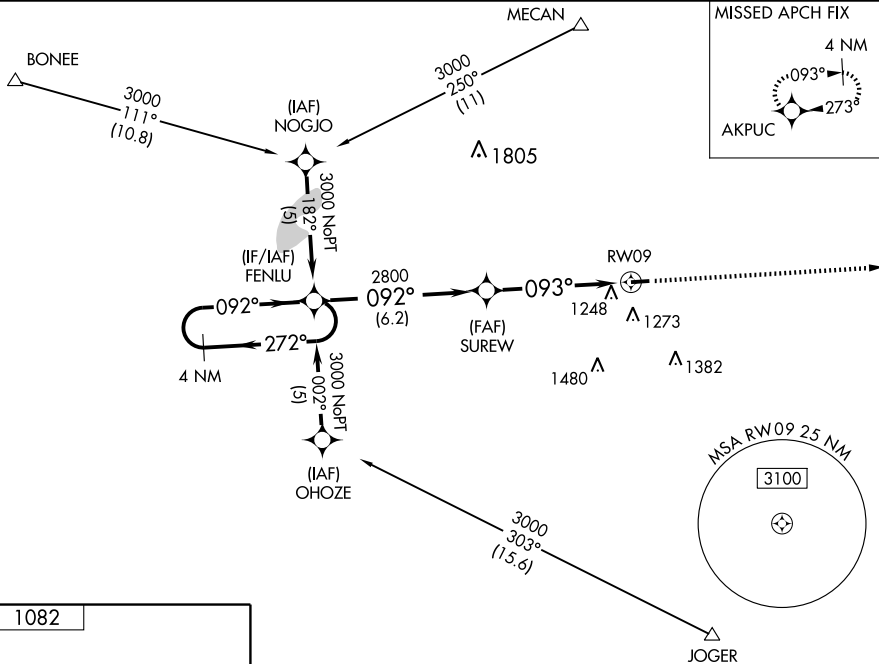
LONDON/MADISON COUNTY (UYF)

▽ Baro-VNAV NA when using Springfield altimeter setting. For uncompensated Baro-VNAV systems, LNAV/VNAV NA below -17°C (2°F) or above 46°C (114°F).
▲ NA DME/DME RNP-0.3 NA. Visibility reduction by helicopters NA. Obtain local altimeter setting on CTAF; when not received, use Springfield altimeter setting and increase all DA 47 feet and all MDA 60 feet and LNAV Cat C/D and Circling Cat C visibility ¼ mile.

MISSED APPROACH: Climb to 3000 direct AKPUC and hold.

DAYTON APP CON
118.85 127.225 327.1

UNICOM
123.0 (CTAF) 1



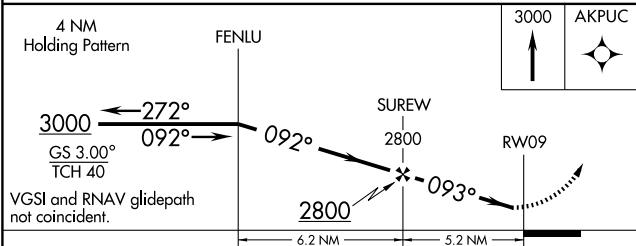
EC-2, 22 OCT 2009 to 19 NOV 2009

EC-2, 22 OCT 2009 to 19 NOV 2009

ELEV 1082

TDZE 1082
0.8% UP
4001 X 75

REIL Rwy 9 and 27
MIRL Rwy 9-27



CATEGORY	A	B	C	D
LPV DA		1332-1	250 (300-1)	
LNAV/VNAV DA		1548-1¾ 466 (500-1¾)		
LNAV MDA	1580-1	498 (500-1)	1580-1¼ 498 (500-1¼)	1580-1½ 498 (500-1½)
CIRCLING	1600-1 518 (600-1)	1640-1 558 (600-1)	1640-1½ 558 (600-1½)	1640-2 558 (600-2)