

WAAS CH 61009 W27A	APP CRS 273°	Rwy Idg TDZE Apt Elev	4001 1073 1082
--	------------------------	-----------------------------	---

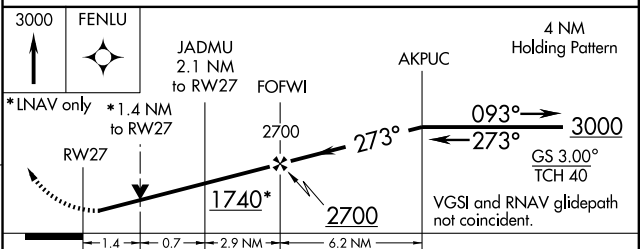
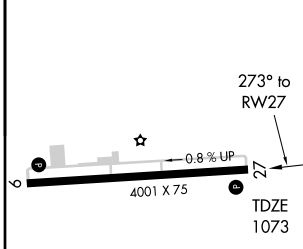
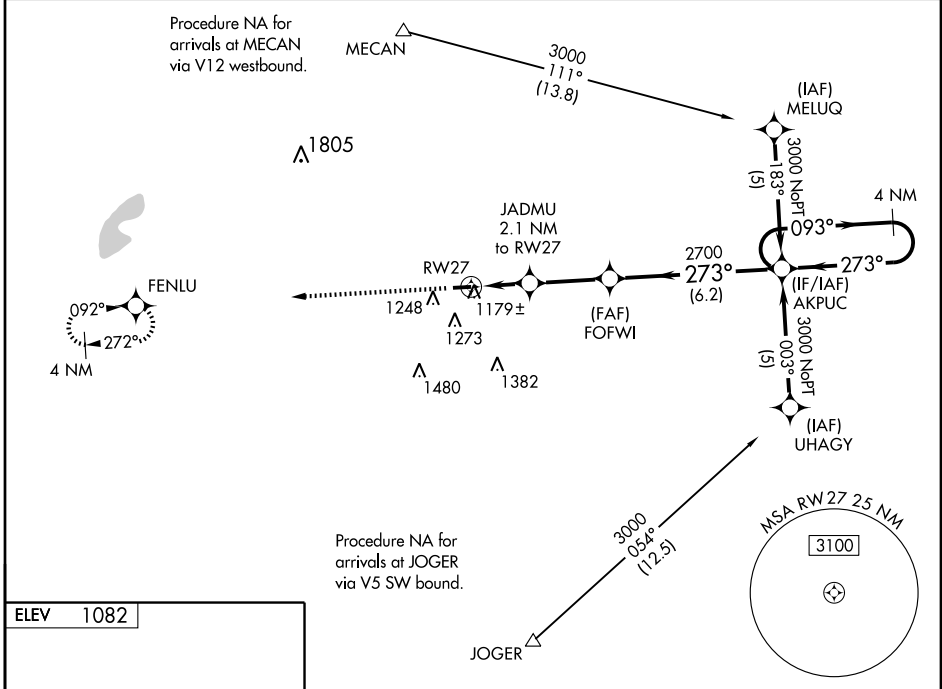
RNAV (GPS) RWY 27

LONDON/MADISON COUNTY (UYF)

Baro-VNAV and VDP NA when using Springfield altimeter setting. For uncompensated Baro-VNAV systems, LNAV/VNAV NA below -17°C (2°F) or above 46°C (114°F).
 DME/DME RNP-0.3 NA. Visibility reduction by helicopters NA. Obtain local altimeter setting on CTAF; when not received, use Springfield altimeter setting and increase all DA 47 feet and all MDA 60 feet and LPV visibility ¼ mile all Cats, LNAV Cat C/D ¼ mile, and Circling Cat C ¼ mile.

MISSED APPROACH: Climb to 3000 direct FENLU and hold.

DAYTON APP CON 118.85 127.225 327.1	UNICOM 123.0 (CTAF)
---	-------------------------------



CATEGORY	A	B	C	D
LPV DA	1400-1¼ 327 (400-1¼)			
LNAV/VNAV DA	1449-1½ 376 (400-1½)			
LNAV MDA	1540-1	467 (500-1)	1540-1¼ 467 (500-1¼)	1540-1½ 467 (500-1½)
CIRCLING	1600-1 518 (600-1)	1640-1 558 (600-1)	1640-1½ 558 (600-1½)	1640-2 558 (600-2)

REIL Rwy 9 and 27
 MIRL Rwy 9-27

EC-2, 22 OCT 2009 to 19 NOV 2009

EC-2, 22 OCT 2009 to 19 NOV 2009